



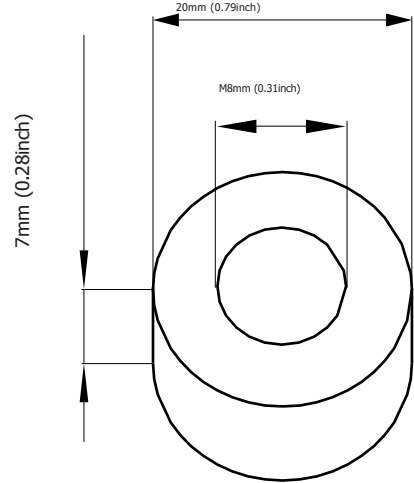
**GREENSAVER** OPzS batteries are designed with a combination of die-casting Tubular positive framework and superfluous electrolyte technologies to offer a very high level of reliability and a long service life.

**GREENSAVER** OPzS batteries used special filter and proof design to ensure no acid fog runs over and burning proof, and also convenient examine and maintenance.

**GREENSAVER** OPzS batteries make if idea for a wide range of applications such as Telecommunications, Photovoltaic System, Security System, emergency lighting and UPS.

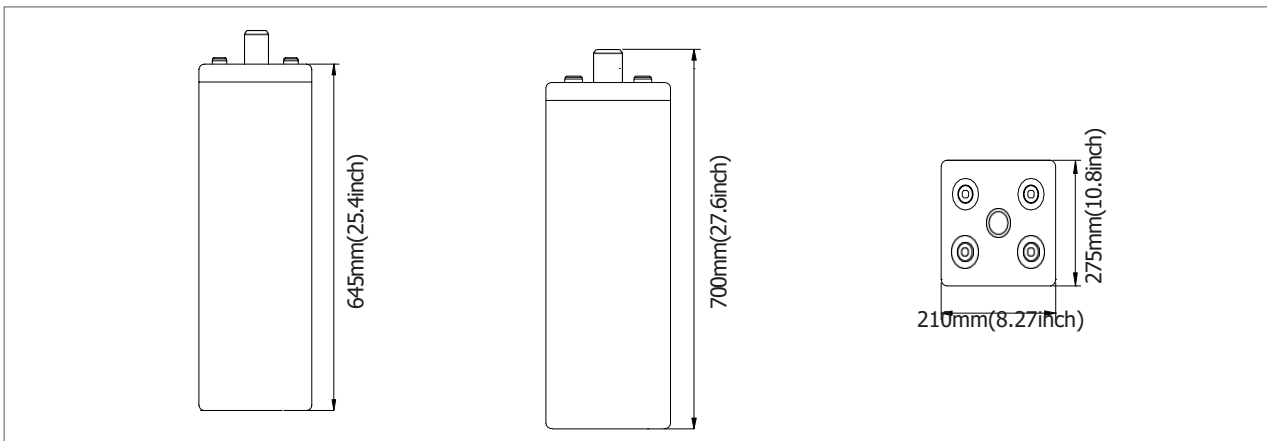
**Features & Benefits**

- Low maintenance.
- Super long service life.
- Transparent containers, convenient to observe.
- Special filter installation for acid fog proof.
- High quality and high reliability.
- Special pole sealed technology.
- DIN40736-1 compliant.

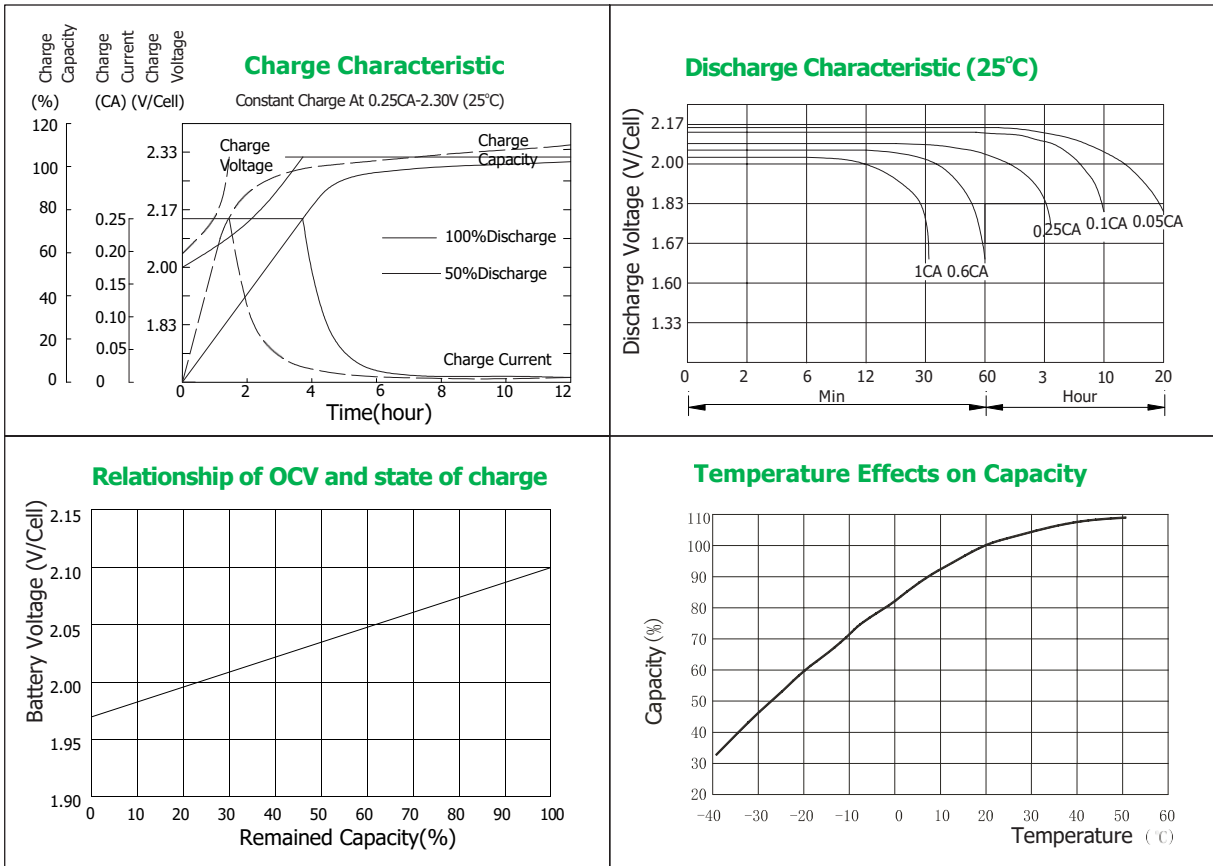


**Cell Dimensions**

**Terminal Dimensions**



Battery Model	OPzS1200			
Designed Floating Life	20 Years			
Capacity(25°C)	24HR(53.8A,1.80V)	10HR(120A,1.80V)	5HR(200A,1.80V)	1HR(636A,1.75V)
	1291AH	1200AH	1000AH	636AH
Dimensions	Length	Width	Height	Total Height
	275mm(10.8inch)	210mm(8.27inch)	645mm(25.4inch)	700mm(27.6inch)
Approx. Weight	without electrolyte:65.8Kg (145 lbs)		with electrolyte:88.0Kg(194lbs)	
Internal Resistance	Full charged at 20°C: 0.00055 Ohm			
Self Discharge	3% of capacity declined per month at (20°C)			
Capacity Affected by Temp.(10HR)	40°C	25°C	0°C	-15°C
	102%	100%	85%	65%
Charge Voltage(25°C)	Cycle use		Float use	
	2.35-2.40V/cell(-5mV/cell/°C), max. Current: 300A		2.23V/cell(-3.0mV/cell/°C)	



Constant Current Discharge Data Units: Amperes (25°C, 77°F)

End voltage	minutes	hours									
	30	1	2	3	4	5	6	8	10	24	48
1.60V	1011	692.3	431.4	311.1	248.0	213.8	188.9	153.0	127.3	56.6	31.4
1.65V	977.4	676.1	423.3	306.3	245.5	211.5	186.5	151.9	126.6	56.6	31.1
1.70V	936.7	656.2	412.8	301.7	242.1	208.5	183.6	150.2	126.0	56.0	30.9
1.75V	901.7	636.4	402.1	294.7	237.4	205.0	180.0	147.3	124.2	55.1	30.5
1.80V	824.9	606.2	387.1	288.8	232.7	200.3	175.4	143.7	120.3	53.8	29.8
1.85V	694.6	563.1	366.0	279.4	225.6	193.8	169.4	139.6	118.9	52.0	28.5
1.95V	592.2	450.3	319.2	249.1	210.3	180.4	156.5	126.6	106.9	47.8	26.6

Constant Power Discharge Data Units: Watts per cell (25°C, 77°F)

End voltage	minutes	hours									
	30	1	2	3	4	5	6	8	10	12	24
1.60V	3066.9	2348.3	1295.1	984.8	786.9	663.8	583.8	481.8	406.6	339.5	178.8
1.65V	2904.1	2183.0	1286.7	977.5	780.9	659.4	579.7	478.3	403.8	337.2	177.5
1.70V	2772.2	2045.4	1268.8	964.5	770.1	650.2	571.8	471.8	398.2	332.5	175.1
1.75V	2660.5	1924.2	1233.0	940.5	740.1	627.2	559.2	464.1	390.8	326.3	172.6
1.80V	2553.7	1816.1	1188.9	914.3	722.2	598.5	533.8	442.3	370.8	309.6	169.8
1.85V	2453.9	1689.0	1144.7	868.9	686.2	582.3	513.1	430.6	355.5	296.8	165.3
1.95V	2239.0	1503.7	1038.4	840.3	722.2	603.3	489.0	408.8	322.4	269.2	157.4

