



OPzS -1000

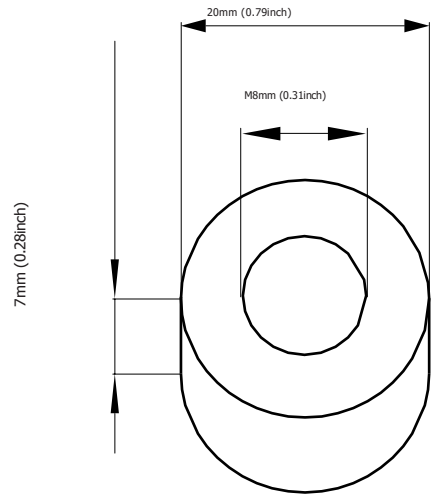
GREENSAVER OPzS batteries are designed with a combination of die-casting Tubular positive framework and superfluous electrolyte technologies to offer a very high lever of reliability and a long service life.

GREENSAVER OPzS batteries used special filter and proof design to ensure no acid fog runs over and burning proof, and also convenient examine and maintenance.

GREENSAVER OPzS batteries make if idea for a wide range of applications such as Telecommunications, Photovoltaic System, Security System, emergency lighting and UPS.

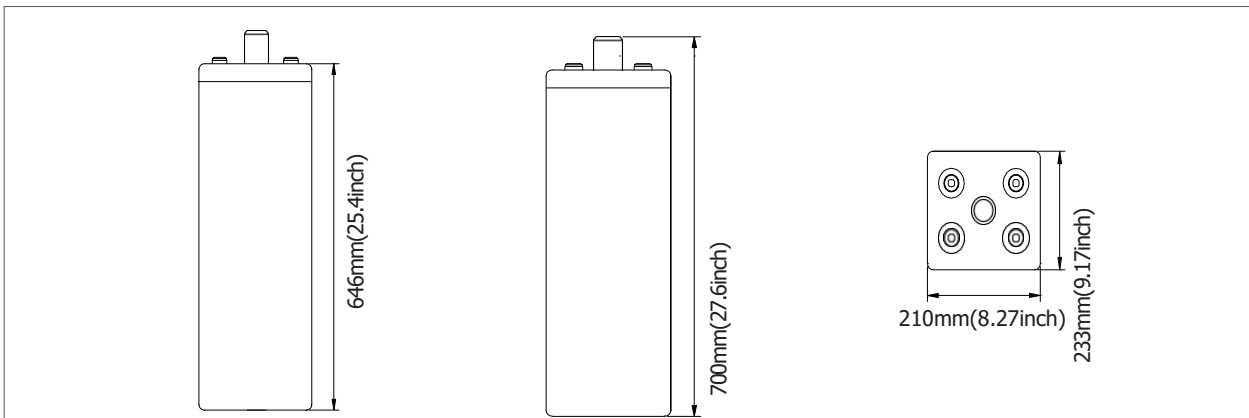
Features & Benefits

- Low maintenance.
- Super long service life.
- Transparent containers, convenient to observe.
- Special filter installation for acid fog proof.
- High quality and high reliability.
- Special pole sealed technology.
- DIN40736-1 compliant.

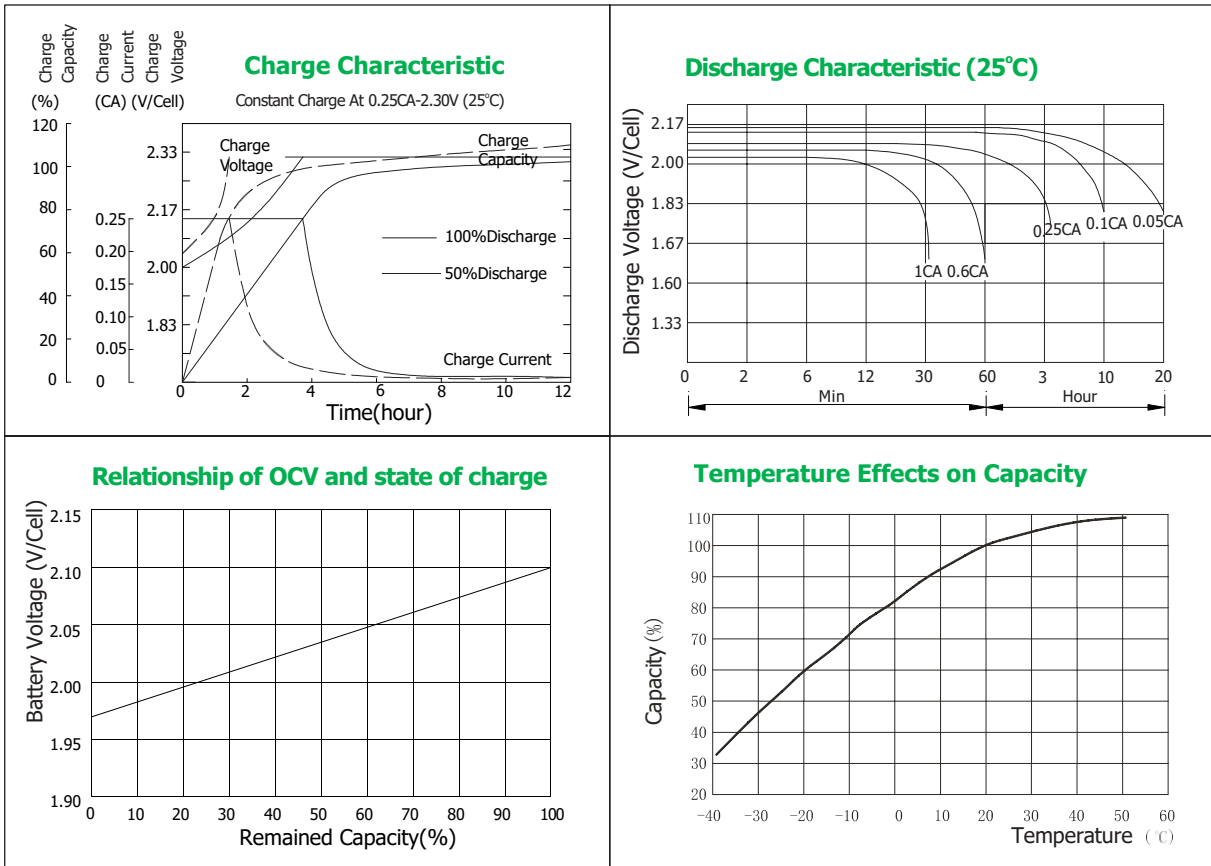


Cell Dimensions

Terminal Dimensions



Battery Model	OPzS1000			
Designed Floating Life	20 Years			
Capacity(25°C)	24HR(44.8A,1.80V)	10HR(100A,1.80V)	5HR(167A,1.80V)	1HR(505A,1.75V)
	1075AH	1000AH	835AH	505AH
Dimensions	Length	Width	Height	Total Height
	233mm(9.17inch)	210mm(8.27inch)	646mm(25.4inch)	700mm(27.6inch)
Approx. Weight	without electrolyte:59Kg (130 lbs)		with electrolyte:78.0Kg(172 lbs)	
Internal Resistance	Full charged at 20°C: 0.00055 Ohm			
Self Discharge	3% of capacity declined per month at (20°C)			
Capacity Affected by Temp.(10HR)	40°C	25°C	0°C	-15°C
	102%	100%	85%	65%
Charge Voltage(25°C)	Cycle use		Float use	
	2.35-2.40V/cell(-5mV/cell/°C), max. Current: 250A		2.23V/cell(-3.0mV/cell/°C)	



Constant Current Discharge Data Units: Amperes (25°C, 77°F)

End voltage	minutes	hours									
	30	1	2	3	4	5	6	8	10	24	48
1.60V	842.5	576.9	359.5	259.2	206.7	178.1	157.4	127.5	106.1	47.2	26.1
1.65V	814.5	563.4	352.7	255.3	204.6	176.2	155.4	126.6	105.5	47.2	25.9
1.70V	780.5	546.8	344.0	251.4	201.8	173.7	153.1	125.1	105.0	46.7	25.7
1.75V	751.4	530.4	335.2	245.5	197.8	170.9	150.1	122.8	103.5	45.9	25.4
1.80V	687.4	505.2	322.6	240.7	193.9	166.9	146.2	119.7	100.3	44.8	24.9
1.85V	578.8	469.2	305.0	232.8	188.0	161.5	141.2	116.3	99.0	43.4	23.7
1.95V	493.5	375.2	266.0	207.6	175.2	150.4	130.4	105.5	89.0	39.8	22.2

Constant Power Discharge Data Units: Watts per cell (25°C, 77°F)

End voltage	minutes	hours									
	30	1	2	3	4	5	6	8	10	12	24
1.60V	1705.4	1305.5	720.1	547.1	437.8	369.2	324.7	267.9	226.1	188.8	99.5
1.65V	1615.4	1214.5	715.2	544.1	434.8	366.6	322.4	266.1	224.5	187.5	98.8
1.70V	1541.2	1137.3	705.2	536.1	428.8	361.6	318.0	262.4	221.5	185.0	97.4
1.75V	1479.8	1070.0	685.3	523.2	411.9	348.8	310.9	258.0	217.4	181.5	95.9
1.80V	1420.4	1009.6	661.5	508.3	401.9	332.8	296.8	246.0	206.3	172.3	94.6
1.85V	1364.9	939.3	636.6	483.4	381.9	323.9	285.3	239.5	197.6	165.0	92.0
1.95V	1245.1	836.4	576.9	467.5	401.9	335.5	272.0	227.4	179.3	149.7	87.6

