



MAIN NEW ENERGY CO.,LTD

Tubular Battery

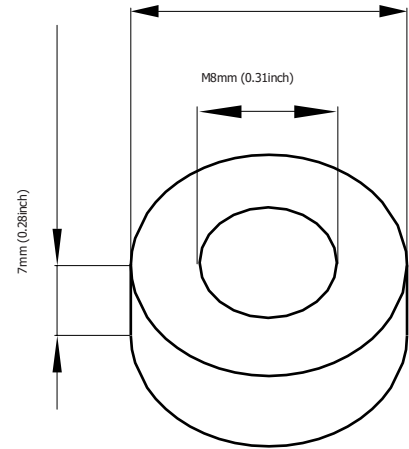
20mm (0.79inch)

OPzS-300

GREENSAVER OPzS batteries are designed with a combination of die-casting Tubular positive framework and superfluous electrolyte technologies to offer a very high level of reliability and a long service life.

GREENSAVER OPzS batteries used special filter and proof design to ensure no acid fog runs over and burning proof, and also convenient examine and maintenance.

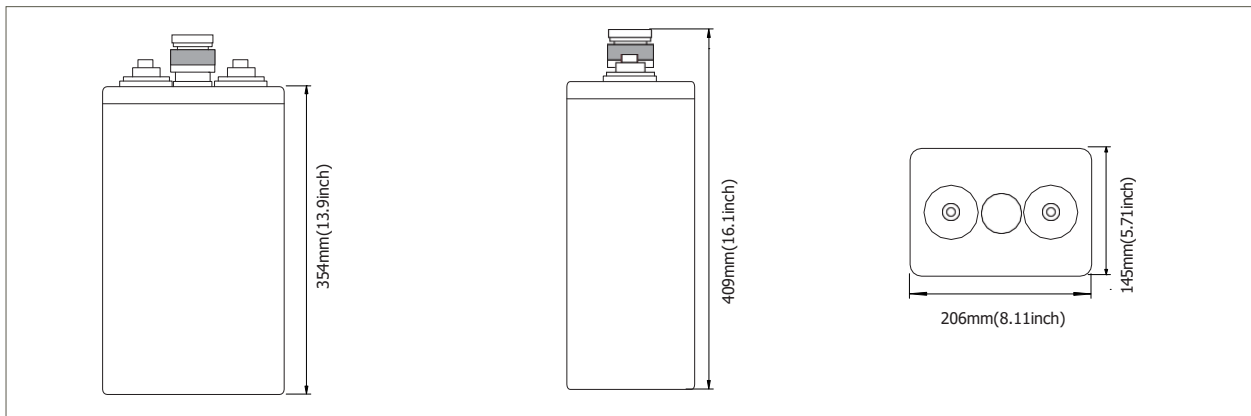
GREENSAVER OPzS batteries make if idea for a wide range of applications such as Telecommunications, Photovoltaic System, Security System, emergency lighting and UPS.



Features & Benefits

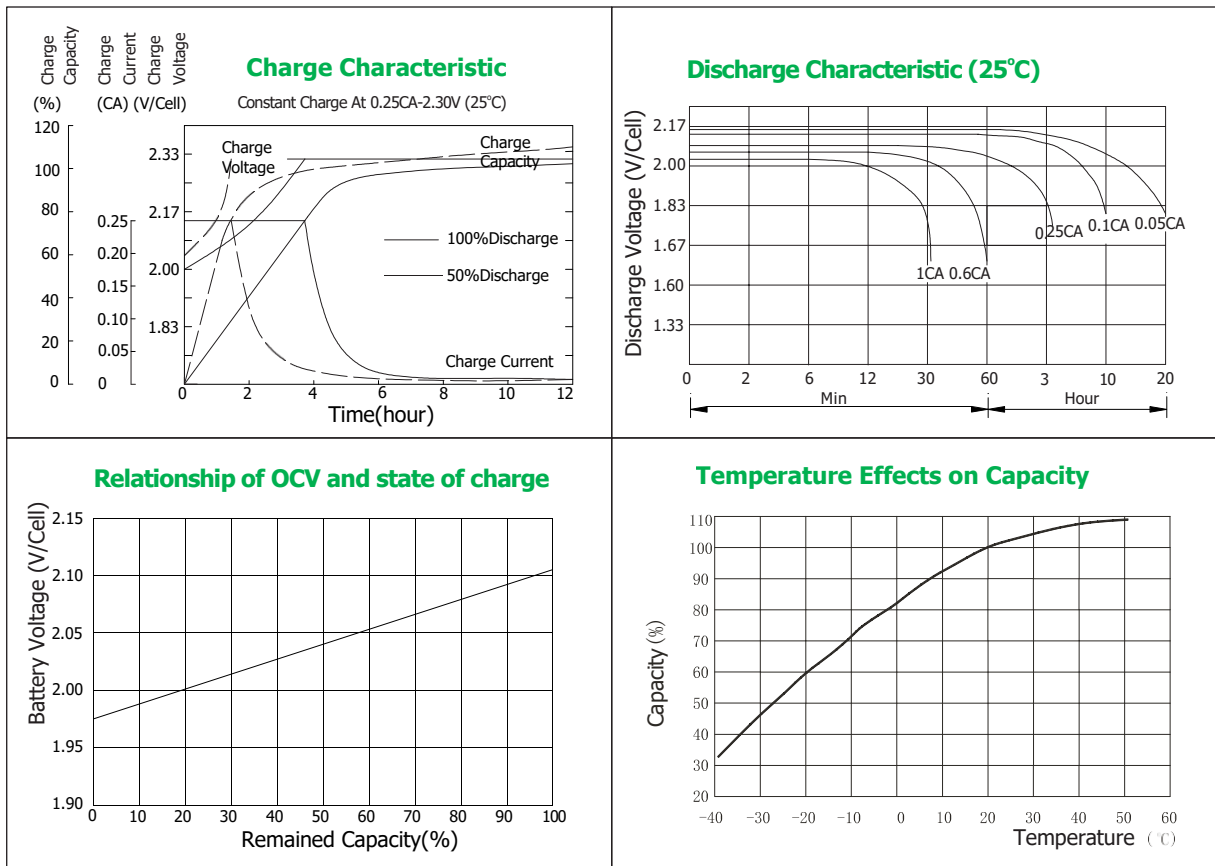
- Low maintenance.
- Super long service life.
- Transparent containers, convenient to observe.
- Special filter installation for acid fog proof.
- High quality and high reliability.
- Special pole sealed technology.
- DIN40736-1 compliant.

Cell Dimensions



Terminal Dimensions

Battery Model	OPzS300			
Designed Floating Life	20 Years			
Capacity(25°C)	24HR(13.6A,1.80V)	10HR(30A,1.80V)	5HR(50.4A,1.80V)	1HR(161A,1.75V)
	326AH	300AH	252AH	161AH
Dimensions	Length	Width	Height	Total Height
	145mm(5.71inch)	206mm(8.11inch)	354mm(13.9inch)	409mm(16.1inch)
Approx. Weight	without electrolyte:19.2Kg (42.3lbs)		with electrolyte:24.3Kg(53.6lbs)	
Internal Resistance	Full charged at 25°C: 0.00075 Ohm			
Self Discharge	3% of capacity declined per month at (20°C)			
Capacity Affected by Temp.(10HR)	40°C	25°C	0°C	-15°C
	102%	100%	85%	65%
Charge Voltage(25°C)	Cycle use		Float use	
	2.35-2.40V/cell(-5mV/cell/°C), max. Current: 75A		2.23V/cell(-3.0mV/cell/°C)	



Constant Current Discharge Data Units: Amperes (25°C, 77°F)

End voltage	minutes		hours									
	30	1	2	3	4	5	6	8	10	24	48	
1.60V	255.0	174.5	109.1	79.0	62.6	53.9	47.7	38.5	31.7	14.3	7.9	
1.65V	246.2	170.7	106.2	76.9	61.7	53.3	47.1	38.3	31.6	14.3	7.9	
1.70V	236.5	164.8	104.2	76.0	60.7	52.6	46.2	37.9	31.4	14.1	7.8	
1.75V	227.9	161.0	101.3	74.1	59.8	51.7	45.4	37.1	31.1	13.8	7.7	
1.80V	208.5	153.2	97.4	73.1	58.8	50.4	44.2	36.2	30.1	13.6	7.6	
1.85V	175.5	141.6	92.6	70.1	56.8	48.9	42.7	35.2	29.6	13.2	7.1	
1.95V	149.3	113.4	80.9	63.3	52.8	45.5	39.4	31.9	26.6	12.0	6.7	

Constant Power Discharge Data Units: Watts per cell (25°C, 77°F)

End voltage	minutes		hours									
	30	1	2	3	4	5	6	8	10	12	24	
1.60V	515.7	394.9	217.8	165.1	132.0	111.6	98.3	81.0	68.4	58.9	30.2	
1.65V	488.9	367.2	216.8	164.1	131.0	110.9	97.5	80.4	67.9	58.6	30.0	
1.70V	466.2	344.4	213.9	162.1	129.9	109.4	96.2	79.3	67.0	57.8	29.6	
1.75V	447.4	323.7	207.9	158.1	125.0	105.9	94.0	78.1	65.7	57.1	29.2	
1.80V	429.6	305.8	200.0	154.2	122.0	100.7	89.8	74.4	62.4	53.4	28.7	
1.85V	412.8	284.1	193.0	146.3	116.0	98.0	86.3	72.5	59.8	51.3	28.0	
1.95V	377.1	253.4	175.1	141.3	122.0	101.9	82.3	68.7	54.2	46.9	26.7	

