



OPzS-350

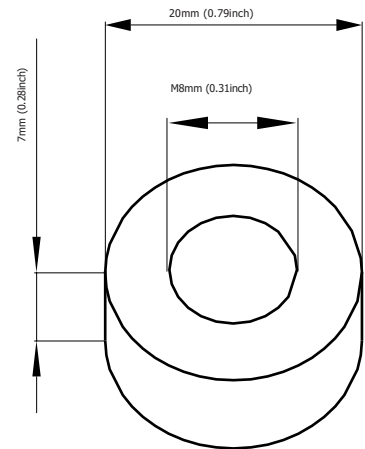
GREENSAVER OPzS batteries are designed with a combination of die-casting Tubular positive framework and superfluous electrolyte technologies to offer a very high level of reliability and a long service life.

GREENSAVER OPzS batteries used special filter and proof design to ensure no acid fog runs over and burning proof, and also convenient examine and maintenance.

GREENSAVER OPzS batteries make if idea for a wide range of applications such as Telecommunications, Photovoltaic System, Security System, emergency lighting and UPS.

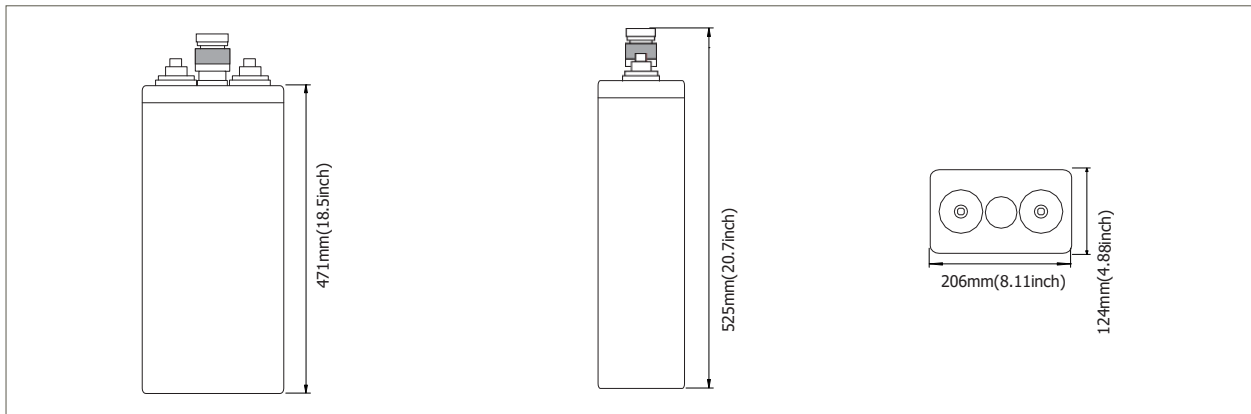
Features & Benefits

- Low maintenance.
- Super long service life.
- Transparent containers, convenient to observe.
- Special filter installation for acid fog proof.
- High quality and high reliability.
- Special pole sealed technology.
- DIN40736-1 compliant.

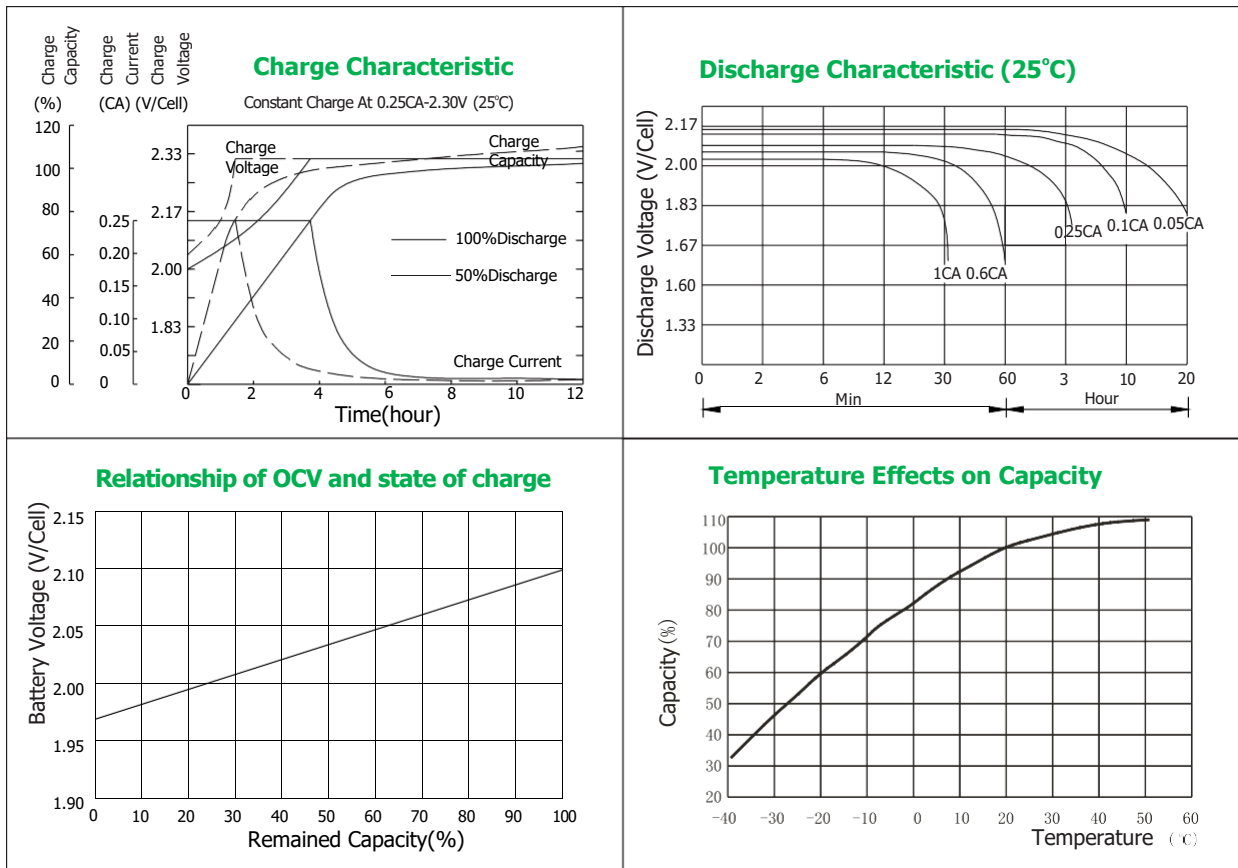


Cell Dimensions

Terminal Dimensions



| | | | | |
|----------------------------------|--|-----------------|--------------------------------|-----------------|
| Battery Model | OPzS350 | | | |
| Designed Floating Life | 20 Years | | | |
| Capacity(25°C) | 24HR(15.5A,1.80V) | 10HR(35A,1.80V) | 5HR(57.5A,1.80V) | 1HR(183A,1.80V) |
| | 372AH | 350AH | 288AH | 183AH |
| Dimensions | Length | Width | Height | Total Height |
| | 124mm(4.88inch) | 206mm(8.11inch) | 471mm(18.5inch) | 525mm(20.7inch) |
| Approx. Weight | without electrolyte:19.5Kg (43.0lbs) | | with electrolyte:27Kg(59.5lbs) | |
| Internal Resistance | Full charged at 20°C: 0.00075 Ohm | | | |
| Self Discharge | 3% of capacity declined per month at (20°C) | | | |
| Capacity Affected by Temp.(10HR) | 40°C | 25°C | 0°C | -15°C |
| | 102% | 100% | 85% | 65% |
| Charge Voltage(25°C) | Cycle use | | Float use | |
| | 2.35-2.40V/cell(-5mV/cell/°C), max. Current: 87A | | 2.23V/cell(-3.0mV/cell/°C) | |



Constant Current Discharge Data Units: Amperes (25°C, 77°F)

| End voltage | minutes | | | | hours | | | | | | | |
|-------------|---------|-------|-------|------|-------|------|------|------|------|------|------|--|
| | 30 | 1 | 2 | 3 | 4 | 5 | 6 | 8 | 10 | 24 | 48 | |
| 1.60V | 290.1 | 198.8 | 124.2 | 89.3 | 71.0 | 61.3 | 54.2 | 43.9 | 36.2 | 16.3 | 9.00 | |
| 1.65V | 280.4 | 193.9 | 121.0 | 87.7 | 70.2 | 60.7 | 53.6 | 43.6 | 36.0 | 16.3 | 8.90 | |
| 1.70V | 269.1 | 188.3 | 118.6 | 86.9 | 69.4 | 59.9 | 52.7 | 43.1 | 35.9 | 16.1 | 8.80 | |
| 1.75V | 258.6 | 182.6 | 115.3 | 84.4 | 68.5 | 58.8 | 51.7 | 42.2 | 35.3 | 15.8 | 8.70 | |
| 1.80V | 236.7 | 173.7 | 111.2 | 82.8 | 66.9 | 57.5 | 50.4 | 41.2 | 35.0 | 15.5 | 8.60 | |
| 1.85V | 199.6 | 161.6 | 105.6 | 80.4 | 64.5 | 55.7 | 48.6 | 40.1 | 33.8 | 14.9 | 8.20 | |
| 1.95V | 169.7 | 129.3 | 91.8 | 71.5 | 60.4 | 51.8 | 44.9 | 36.3 | 30.4 | 13.7 | 7.70 | |

Constant Power Discharge Data Units: Watts per cell (25°C, 77°F)

| End voltage | minutes | | | | hours | | | | | | | |
|-------------|---------|-------|-------|-------|-------|-------|-------|------|------|------|------|--|
| | 30 | 1 | 2 | 3 | 4 | 5 | 6 | 8 | 10 | 12 | 24 | |
| 1.60V | 587.3 | 449.6 | 247.9 | 188.2 | 150.8 | 127.2 | 111.8 | 92.3 | 77.9 | 67.2 | 34.3 | |
| 1.65V | 555.9 | 418.2 | 246.2 | 187.4 | 149.9 | 126.3 | 111.0 | 91.6 | 77.4 | 66.8 | 34.2 | |
| 1.70V | 531.2 | 391.8 | 242.9 | 184.8 | 147.5 | 124.5 | 109.5 | 90.4 | 76.2 | 65.8 | 33.7 | |
| 1.75V | 509.7 | 368.8 | 236.3 | 179.9 | 141.6 | 120.1 | 107.1 | 88.9 | 74.9 | 64.9 | 33.2 | |
| 1.80V | 489.1 | 348.0 | 228.0 | 174.9 | 138.3 | 114.6 | 102.3 | 84.7 | 71.0 | 60.7 | 32.7 | |
| 1.85V | 470.2 | 323.3 | 218.8 | 166.7 | 131.6 | 111.6 | 98.4 | 82.5 | 68.1 | 58.4 | 31.8 | |
| 1.95V | 428.9 | 287.9 | 198.9 | 160.8 | 138.3 | 115.5 | 93.7 | 78.3 | 61.8 | 53.3 | 30.2 | |

