



**OPzS -200**

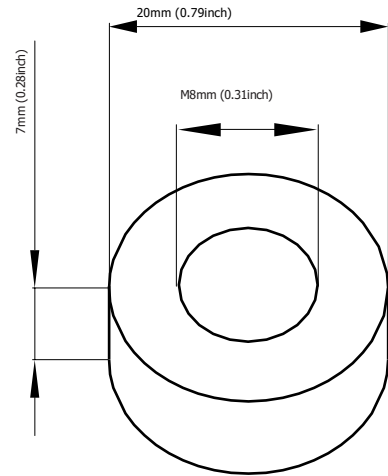
**GREENSAVER** OPzS batteries are designed with a combination of die-casting Tubular positive framework and superfluous electrolyte technologies to offer a very high level of reliability and a long service life.

**GREENSAVER** OPzS batteries used special filter and proof design to ensure no acid fog runs over and burning proof, and also convenient examine and maintenance.

**GREENSAVER** OPzS batteries make if idea for a wide range of applications such as Telecommunications, Photovoltaic System, Security System, emergency lighting and UPS.

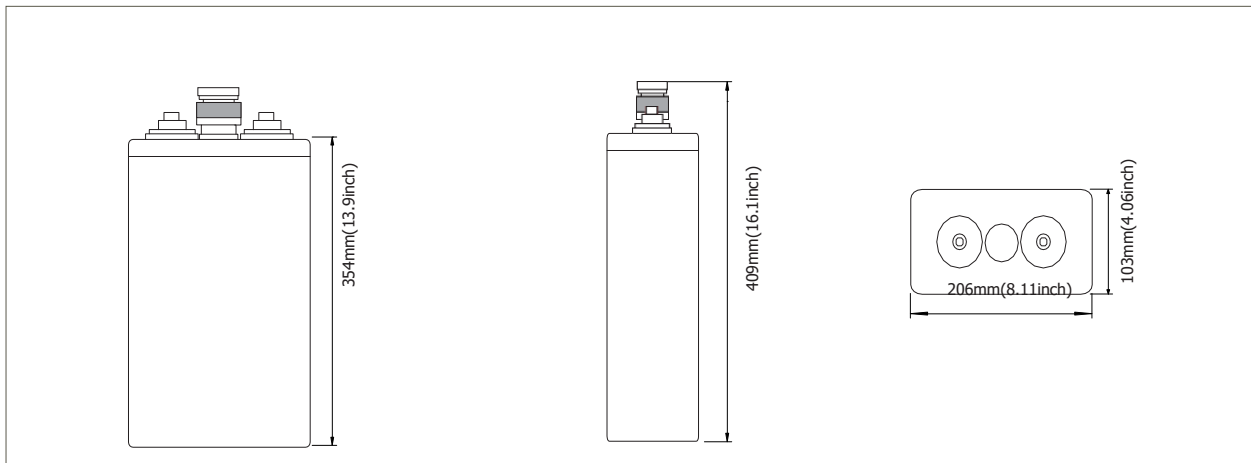
**Features & Benefits**

- Low maintenance.
- Super long service life.
- Transparent containers, convenient to observe.
- Special filter installation for acid fog proof.
- High quality and high reliability.
- Special pole sealed technology.
- DIN40736-1 complaint.

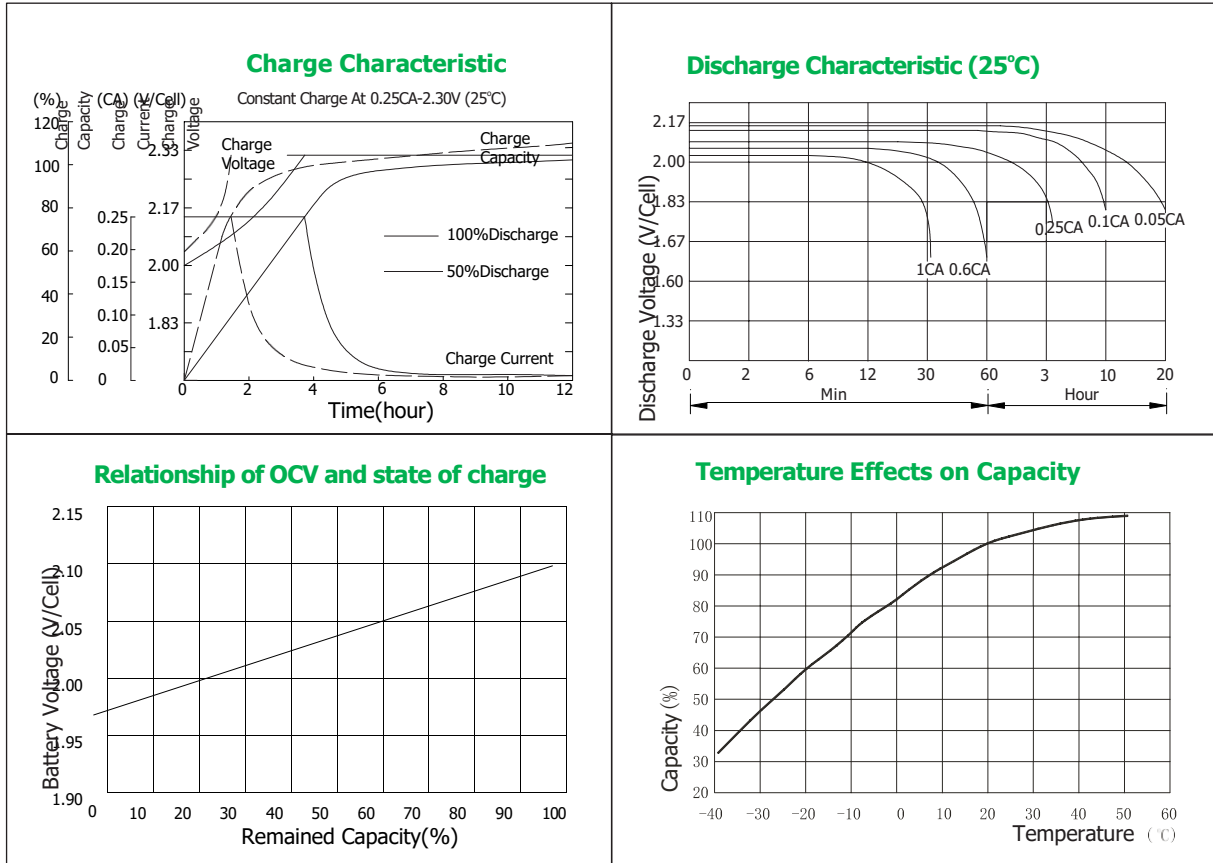


**Terminal Dimensions**

**Cell Dimensions**



Battery Model	OPZS-200			
Designed Floating Life	20 Years			
Capacity(25°C)	24HR(9.0A,1.80V)	10HR(20A,1.80V)	5HR(33.5A,1.80V)	1HR(107A,1.75V)
	216AH	200AH	168AH	107AH
Dimensions	Length	Width	Height	Total Height
	103mm(4.06inch)	206mm(8.11inch)	354mm(13.9inch)	431mm(17.0inch)
Approx. Weight	without electrolyte:13.2Kg (29.1lbs)		with electrolyte:17.2Kg(37.9 lbs)	
Internal Resistance	Full charged at 20°C: 0.0008 Ohm			
Self Discharge	3% of capacity declined per month at (20°C)			
Capacity Affected by Temp.(10HR)	40°C	20°C	0°C	-15°C
	102%	100%	85%	65%
Charge Voltage(25°C)	Cycle use		Float use	
	2.35V-2.40V/cell(-5mV/cell/°C), max. Current: 50A		2.23V/cell(-3.0mV/cell/°C)	



Constant Current Discharge Data Units: Amperes (25°C, 77°F)

End voltage	minutes	hours										
	30	1	2	3	4	5	6	8	10	24	48	
1.60V	169.7	116.4	72.1	52.6	42.1	35.9	31.7	25.8	21.2	9.5	5.3	
1.65V	163.8	113.4	71.2	51.7	41.1	35.6	31.3	25.6	21.1	9.5	5.3	
1.70V	157.1	110.5	69.2	50.6	41.1	35.1	30.9	25.3	21.0	9.4	5.1	
1.75V	151.3	106.7	67.2	49.7	40.2	34.4	30.3	24.7	20.7	9.2	5.1	
1.80V	138.7	101.8	65.3	48.7	39.2	33.6	29.5	24.1	20.1	9.0	5.0	
1.85V	116.4	95.0	61.4	46.8	38.1	32.6	28.4	23.5	19.8	8.8	4.7	
1.95V	99.9	75.6	53.6	41.9	35.3	30.3	26.3	21.2	17.8	8.0	4.4	

Constant Power Discharge Data Units: Watts per cell (25°C, 77°F)

End voltage	minutes	hours										
	30	1	2	3	4	5	6	8	10	12	24	
1.60V	343.5	263.3	145.2	110.4	87.9	74.4	65.4	53.9	45.6	39.3	20.2	
1.65V	325.6	244.5	144.2	109.4	87.9	73.9	65.0	53.6	45.2	39.0	20.0	
1.70V	310.8	229.7	142.2	108.4	86.0	72.9	64.1	53.0	44.6	38.5	19.7	
1.75V	298.0	215.7	138.2	105.5	82.9	70.3	62.7	52.1	43.8	38.0	19.4	
1.80V	286.0	203.9	133.3	102.4	81.0	67.1	59.8	49.6	41.6	35.5	19.1	
1.85V	275.1	189.1	128.3	97.4	77.0	65.3	57.6	48.2	39.8	34.2	18.6	
1.95V	251.4	168.3	116.4	94.5	81.0	67.7	54.8	45.9	36.2	31.2	17.7	

