



OPzS-490

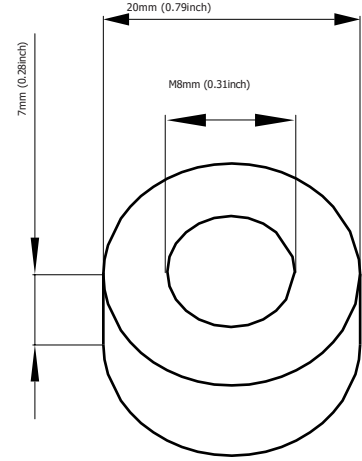
GREENSAVER OPzS batteries are designed with a combination of die-casting Tubular positive framework and superfluous electrolyte technologies to offer a very high level of reliability and a long service life.

GREENSAVER OPzS batteries used special filter and proof design to ensure no acid fog runs over and burning proof, and also convenient examine and maintenance.

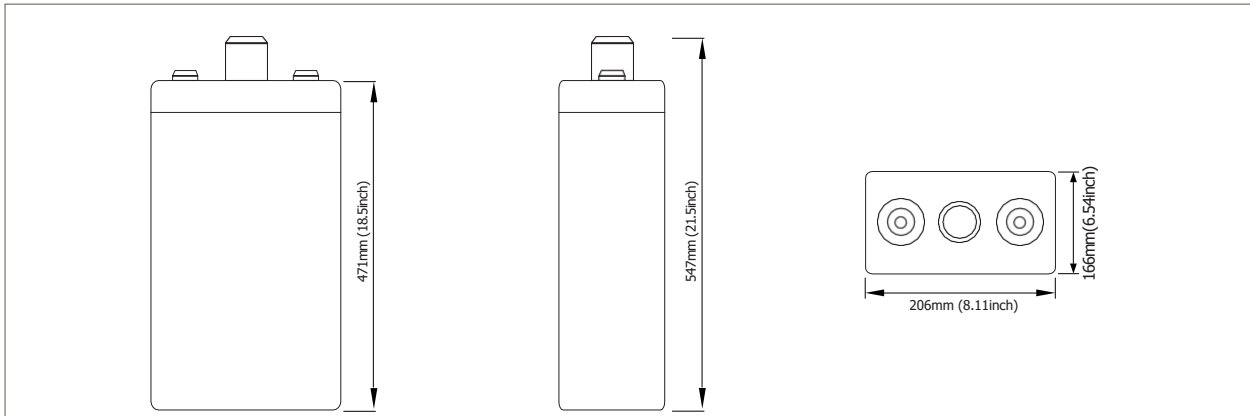
GREENSAVER OPzS batteries make if idea for a wide range of applications such as Telecommunications, Photovoltaic System, Security System, emergency lighting and UPS.

Features & Benefits

- Low maintenance.
- Super long service life.
- Transparent containers, convenient to observe.
- Special filter installation for acid fog proof.
- High quality and high reliability.
- Special pole sealed technology.
- DIN40736-1 compliant.

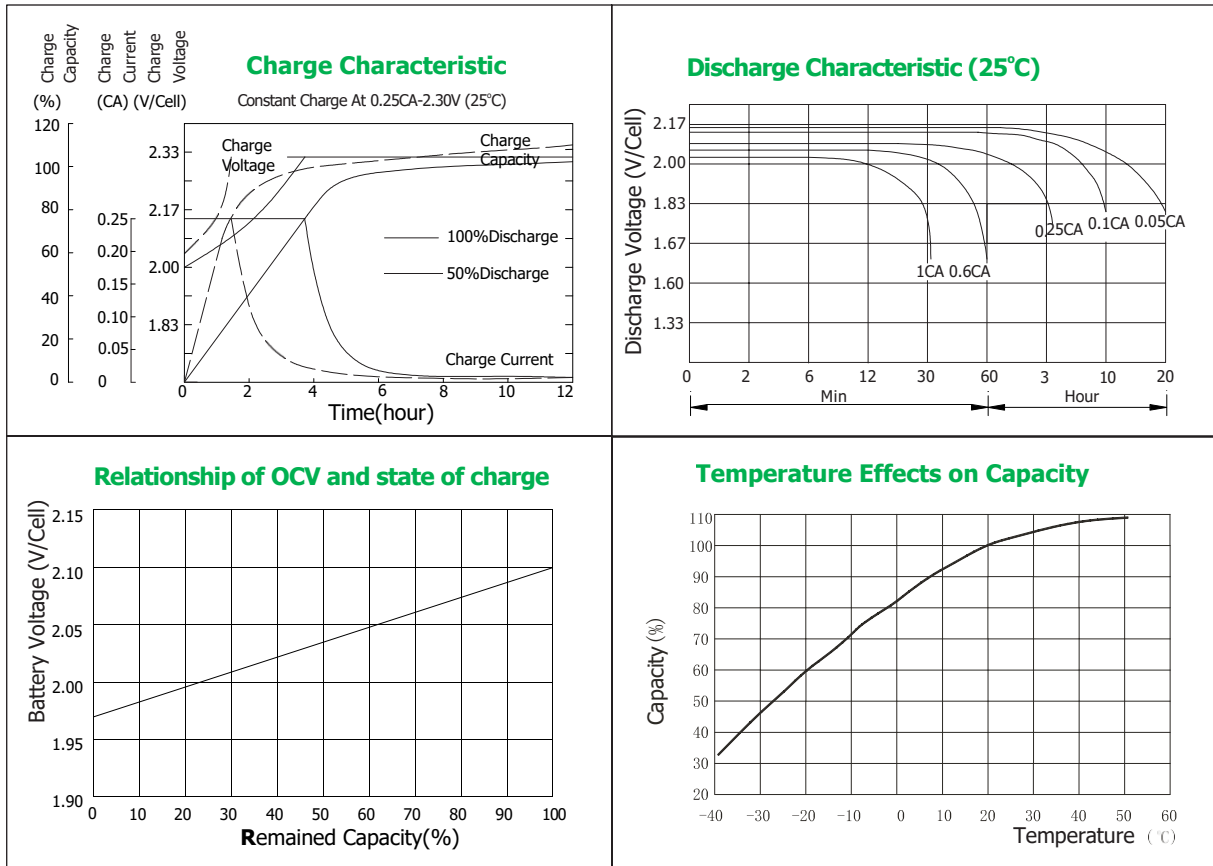


Cell Dimensions



Terminal Dimensions

Battery Model	OPzS490			
Designed Floating Life	20 Years			
Capacity(25°C)	24HR(22.4A,1.80V)	10HR(49.6A,1.80V)	5HR(83.2A,1.80V)	1HR(265A,1.75V)
	538AH	496AH	416AH	265AH
Dimensions	Length	Width	Height	Total Height
	166mm(6.54inch)	206mm(8.11inch)	471mm(18.5inch)	525mm(20.7inch)
Approx. Weight	without electrolyte:27.4Kg (60.4 lbs)		with electrolyte:36.1Kg(79.6 lbs)	
Internal Resistance	Full charged at 20°C: 0.00065 Ohm			
Self Discharge	3% of capacity declined per month at (20°C)			
Capacity Affected by Temp.(10HR)	40°C	25°C	0°C	-15°C
	102%	100%	85%	65%
Charge Voltage(25°C)	Cycle use		Float use	
	2.35-2.40V/cell(-5mV/cell/°C), max. Current: 125A		2.23V/cell(-3.0mV/cell/°C)	



Constant Current Discharge Data Units: Amperes (25°C, 77°F)

End voltage	minutes	hours									
	30	1	2	3	4	5	6	8	10	24	48
1.60V	419.9	288.0	179.2	129.6	102.8	88.9	78.5	63.5	52.4	23.6	13.0
1.65V	406.2	281.2	175.4	127.7	101.8	87.8	77.7	63.1	52.1	23.6	12.9
1.70V	389.8	272.5	171.5	125.7	100.9	86.7	76.3	62.4	51.9	23.4	12.8
1.75V	375.2	264.7	167.6	122.8	98.9	85.2	74.9	61.2	51.2	22.9	12.7
1.80V	343.2	252.1	160.8	119.9	96.9	83.2	72.9	59.8	49.6	22.4	12.4
1.85V	289.0	234.6	152.0	115.9	94.0	80.6	70.5	58.2	48.9	21.6	11.8
1.95V	246.2	187.2	132.6	103.3	87.1	75.0	65.1	52.7	44.0	19.9	11.1

Constant Power Discharge Data Units: Watts per cell (25°C, 77°F)

End voltage	minutes	hours									
	30	1	2	3	4	5	6	8	10	12	24
1.60V	851.2	651.2	359.1	273.5	217.9	184.2	162.0	133.7	112.8	97.3	49.9
1.65V	805.7	605.8	357.1	271.5	217.0	183.0	160.9	132.8	112.0	96.7	49.5
1.70V	769.1	567.1	352.1	267.6	213.9	180.4	158.7	130.9	110.4	95.3	48.9
1.75V	738.4	534.5	342.2	260.7	204.9	174.0	155.1	128.9	108.5	94.1	48.2
1.80V	708.7	503.8	330.3	253.6	199.9	166.1	148.2	122.8	103.0	88.0	47.4
1.85V	680.9	469.1	317.3	241.7	190.9	161.6	142.4	119.4	98.7	84.6	46.1
1.95V	621.6	417.7	288.5	232.7	199.9	167.5	135.8	113.5	89.4	77.3	43.9

