



MAIN NEW ENERGY CO.,LTD

Tubular Battery

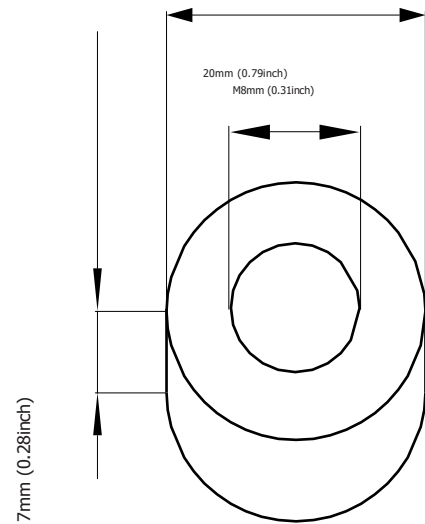
**GREENSAVER** OPzS batteries are designed with a combination of die-casting Tubular positive framework and superfluous electrolyte technologies to offer a very high level of reliability and a long service life.

**GREENSAVER** OPzS batteries used special filter and proof design to ensure no acid fog runs over and burning proof, and also convenient examine and maintenance.

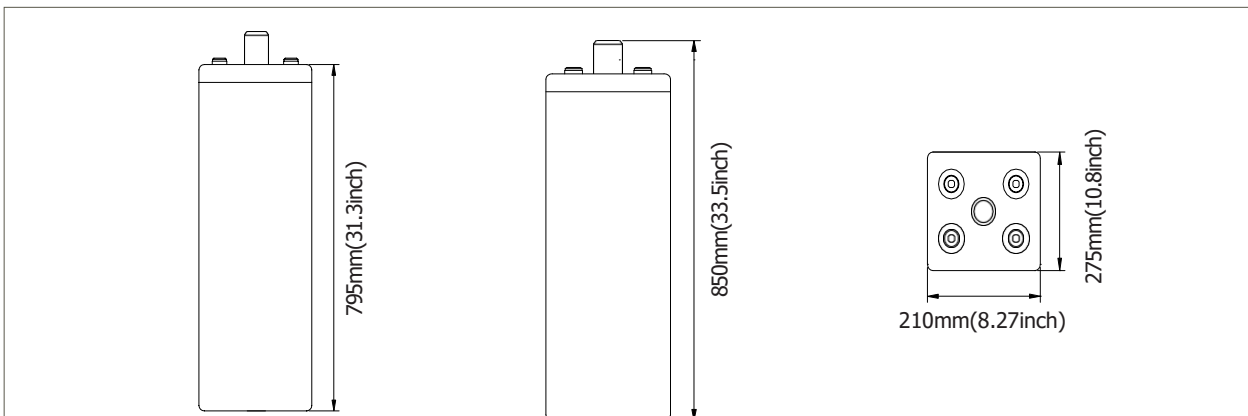
**GREENSAVER** OPzS batteries make if idea for a wide range of applications such as Telecommunications, Photovoltaic System, Security System, emergency lighting and UPS.

### Features & Benefits

- Low maintenance.
- Super long service life.
- Transparent containers, convenient to observe.
- Special filter installation for acid fog proof.
- High quality and high reliability.
- Special pole sealed technology.
- DIN40736-1 compliant.

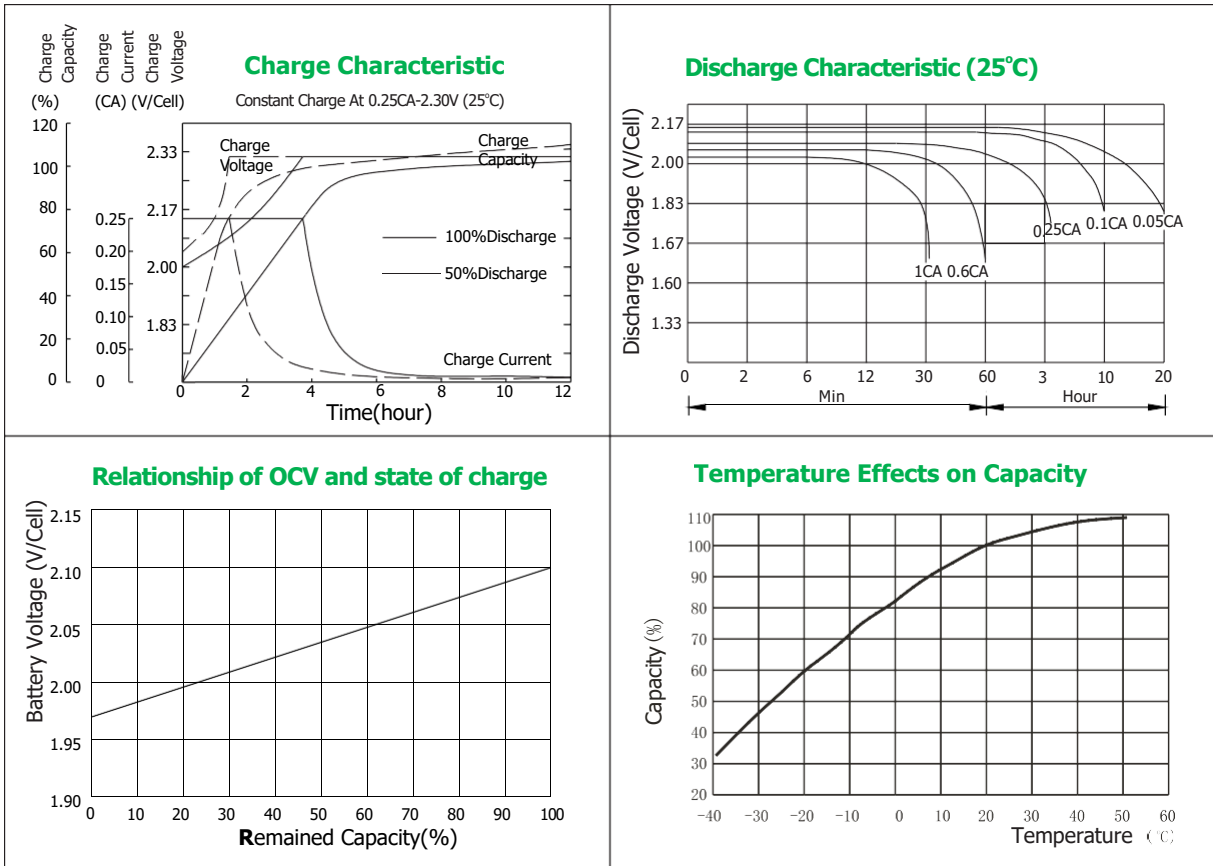


### Cell Dimensions



### Terminal Dimensions

Battery Model	OPzS1500			
Designed Floating Life	20 Years			
Capacity(25°C)	24HR(67.2A,1.80V)	10HR(150A,1.80V)	5HR(250A,1.80V)	1HR(795A,1.75V)
	1613AH	1500AH	1250AH	795AH
Dimensions	Length	Width	Height	Total Height
	275mm(10.8inch)	210mm(8.27inch)	795mm(31.3inch)	850mm(33.5inch)
Approx. Weight	without electrolyte:87Kg (192 lbs)		with electrolyte114.3Kg(252lbs)	
Internal Resistance	Full charged at 20°C: 0.00053 Ohm			
Self Discharge	3% of capacity declined per month at (20°C)			
Capacity Affected by Temp.(10HR)	40°C	25°C	0°C	-15°C
	102%	100%	85%	65%
Charge Voltage(25°C)	Cycle use		Float use	
	2.35-2.40V/cell(-5mV/cell/°C), max. Current: 375A		2.23V/cell(-3.0mV/cell/°C)	



Constant Current Discharge Data Units: Amperes (25°C, 77°F)

End voltage	minutes	hours									
	30	1	2	3	4	5	6	8	10	24	48
1.60V	1262.4	864.9	538.9	388.7	310.4	266.9	236.0	191.1	158.9	70.9	39.1
1.65V	1220.7	843.6	528.1	383.0	306.5	264.0	233.0	189.6	158.0	70.9	38.9
1.70V	1170.3	818.3	515.4	376.2	301.6	260.4	229.3	187.5	157.4	70.1	38.5
1.75V	1126.7	795.1	501.8	368.3	296.7	255.9	224.8	183.8	155.1	68.7	38.0
1.80V	1030.7	756.3	483.3	359.5	290.8	250.1	219.0	179.5	150.3	67.2	37.4
1.85V	866.8	704.0	458.0	348.9	282.0	242.1	211.7	174.4	148.4	65.0	35.6
1.95V	739.8	562.4	398.5	311.8	262.4	225.2	195.5	158.0	133.4	59.7	33.3

Constant Power Discharge Data Units: Watts per cell (25°C, 77°F)

End voltage	minutes	hours									
	30	1	2	3	4	5	6	8	10	12	24
1.60V	3066.9	2348.3	1295.1	984.8	786.9	663.8	583.8	481.8	406.6	339.5	178.8
1.65V	2904.1	2183.0	1286.7	977.5	780.9	659.4	579.7	478.3	403.8	337.2	177.5
1.70V	2772.2	2045.4	1268.8	964.5	770.1	650.2	571.8	471.8	398.2	332.5	175.1
1.75V	2660.5	1924.2	1233.0	940.5	740.1	627.2	559.2	464.1	390.8	326.3	172.6
1.80V	2553.7	1816.1	1188.9	914.3	722.2	598.5	533.8	442.3	370.8	309.6	169.8
1.85V	2453.9	1689.0	1144.7	868.9	686.2	582.3	513.1	430.6	355.5	296.8	165.3
1.95V	2239.0	1503.7	1038.4	840.3	722.2	603.3	489.0	408.8	322.4	269.2	157.4

