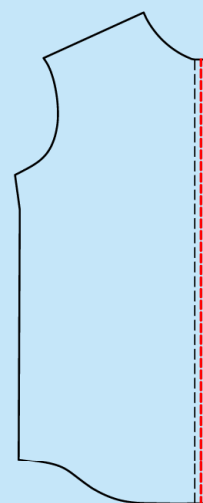
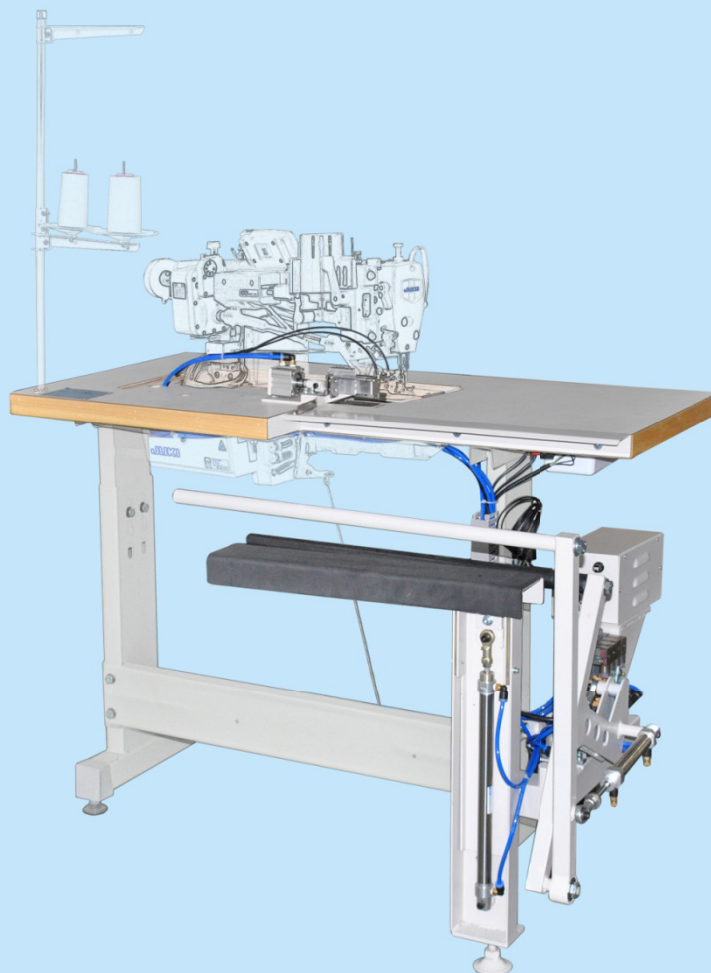


## NS-6021-1

### 襯衫前幅鈕子切樸器連收料架

### Shirt Front Button Interlining Cutting Device with Stacker



- 配合單針平機，車縫男女裝前幅帶樸鈕子
- 電眼感應，自動切筒並將裁片整齊疊好，減少人手收料工序，大大提高工作效率
- 撥布桿自動撥布
- 疊布架能提升，使操作者能在原位取裁片
- 結構緊湊美觀，易於安裝、清潔及維護
- 用戶需自備衣車頭

#### 跟機件：

吹風檯板、腳架

- Suitable for sewing men's or ladies' front button placket with interlining, working together with a single-needle lockstitch machine
- Electric eye senses the operation of front placket cutting and cutting pieces stacking in order automatically to simplify manual collecting procedure and increase work efficiency greatly
- Fabric poke rod can poke fabric automatically
- Fabric folding stand can uplift and help the operator to take the stacked pieces from seat
- Smart and compact design, easy to install, clean and maintain
- Users have to prepare sewing machine head by themselves

#### Standards:

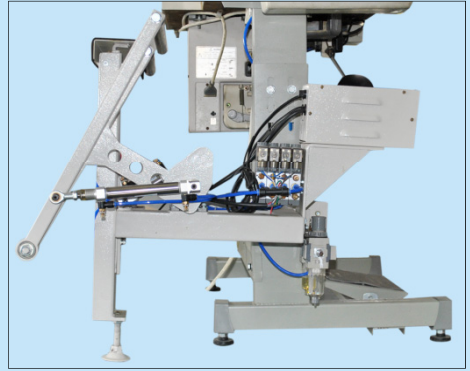
Table Top With Air Blowing, Stand



收料架運行工作中  
The stacker is working

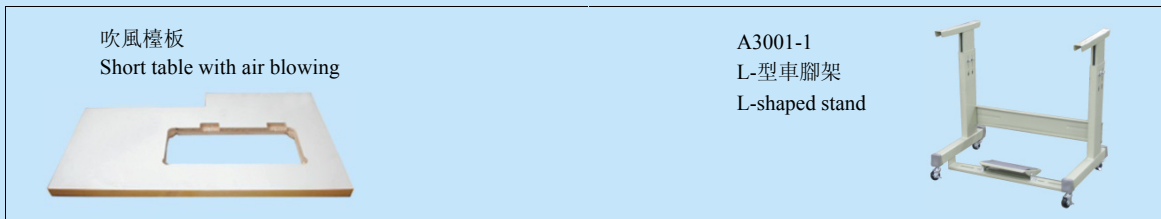


原位取料  
Take a bundle of cutting pieces from seat



氣動元件圖  
Pneumatic elements

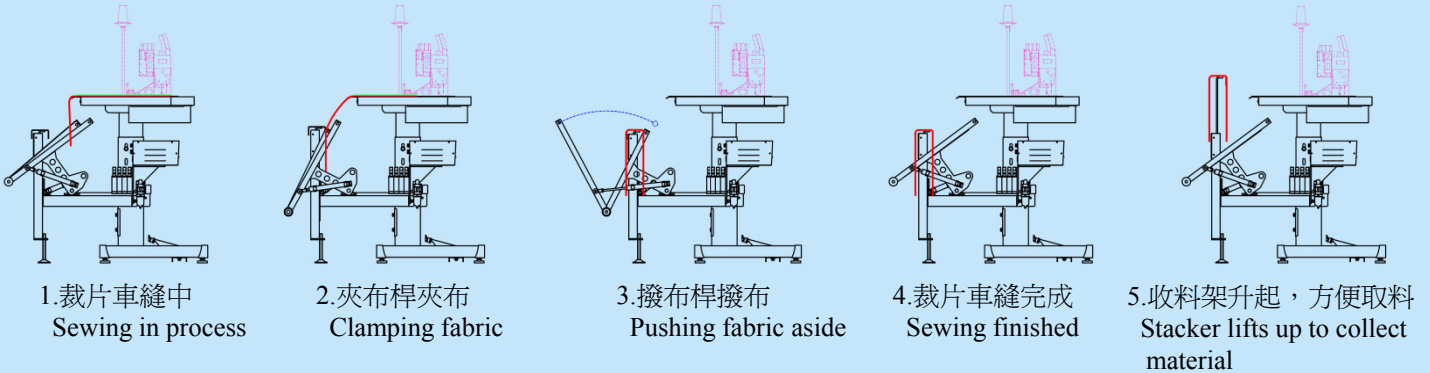
跟機件：  
Standard accessories:



吹風檯板  
Short table with air blowing

A3001-1  
L-型車腳架  
L-shaped stand

收料架流程圖 Flow chart of working process :



型號 Model	適用衣車頭品牌 Brand of the Sewing M/c to be matched	適用衣車頭機型 Model of the Sewing M/c to be matched	電源 Power Supply	總功率(kW) Total Power	壓縮空氣壓力(kgf/cm <sup>2</sup> ) Compressed Air Pressure	耗壓縮空氣量(L/min) Compressed Air Consumption	淨重(kg) Net Weight	機身尺寸(mm) Machine Size
NS-6021-1	重機 JUKI	DDL-5550N	1PH/220V/50Hz	0.05	5	10	58	1165x1050x850
		DDL-5550N-3						
		DDL-5550N-7						
		DDL-8700						
		DDL-8700-7						
		DDL-9000A						
	DDL-9000B							
	兄弟 BROTHER	DB2-737-413						
		DB2-B735						
		S-7200A						
S-7200B								



藝誠(余氏)發展有限公司  
Ngai Shing Development Limited

香港九龍長沙灣永康街52號地下  
G/F., 52 Wing Hong St.,  
Cheung Sha Wan, Kln., Hong Kong.

Tel: (852) 2741 9981, 2742 0078 E-MAIL: info@ngaishing.com  
Fax: (852) 2785 3149 Http://www.ngaishing.com