

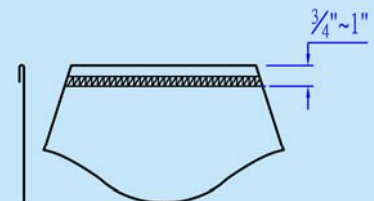
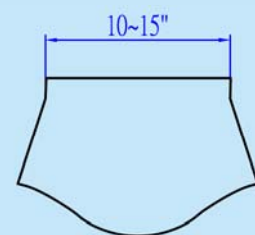
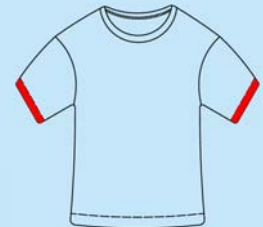
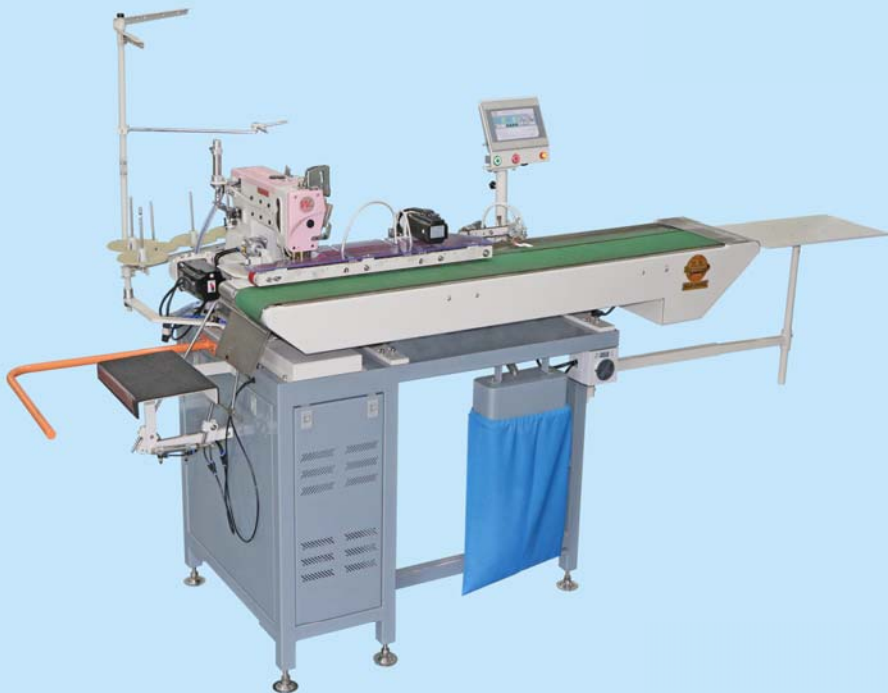
# NS-6316P

## 針織短袖口摺邊縫紉機

## Knitted Short Sleeve Folding Sewer



車 Coverstitch Machine				
	4	3500	UYx128GAS	



- 適用於不卷邊針織布料的短袖口車縫
- 采用PLC可編程控制器控制及人性化操作界面觸摸顯示屏操作
- 自動收料系統可將裁片整齊疊好，節省人手、提高效率
- 操作簡單，只需將裁片連續地放在輸送帶上，機器會自動輸送車縫，適用於生手工人操作
- 特殊設計的蝴蝶與精確的自動對邊功能，使每塊裁片的縫紉效果一致

### 跟機件：

縫紉機(PEGASUS W662PVH-35BX356CS/FT)

- Suitable for knitted short sleeve hemming - fabric edge not overlocked
- Adopt PLC and user friendly touch screen for operation
- Automatic collection system can neatly stack the sewn pieces, saving labor and improving efficiency
- Simple operation, the operator only needs to place the cut piece on conveyor belt and the machine will perform conveying and sewing automatically. Even unskilled worker can handle it at ease
- Specially designed folder and accurate edge alignment function ensure consistent and reliable sewing effect

### Standard:

Sewing head(PEGASUS W662PVH-35BX356CS/FT)

型號 Model	適用衣車頭機型 Applicable Sewing head Model	電源 Power Supply	總功率(kW) Total Power	裁片尺寸(inch) Cut Piece Size	摺邊止口尺寸(inch) Stitch Route Margin	壓縮空氣壓力(kgf/cm <sup>2</sup> ) Compressed Air Pressure	耗壓縮空氣量(L/min) Compressed Air Consumption	機身尺寸(mm) Machine Size
NS-6316P	飛馬 PEGASUS W662PVH-35BX356CS/FT	1PH/220V/50Hz	1	寬 Width 10~15	$\frac{3}{4}$ ~1	5	10	2600x1000x1650



## 藝誠(余氏)發展有限公司 Ngai Shing Development Limited

香港九龍長沙灣永康街52號地下

G/F., 52 Wing Hong St.,

Cheung Sha Wan, Kln., Hong Kong.

Tel: (852)2741 9981, 2742 0078

E-MAIL: info@ngaishing.com

Fax: (852)2785 3149

Http://www.ngaishing.com