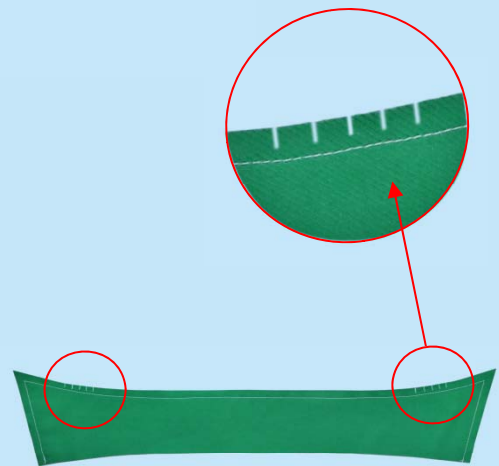
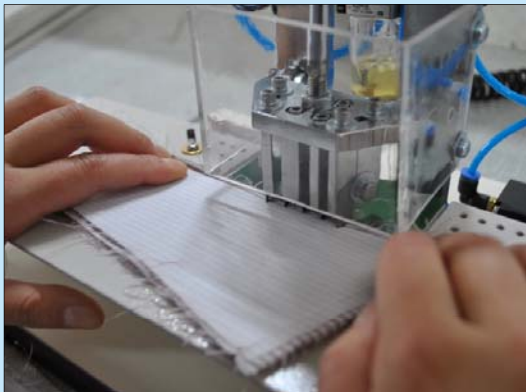
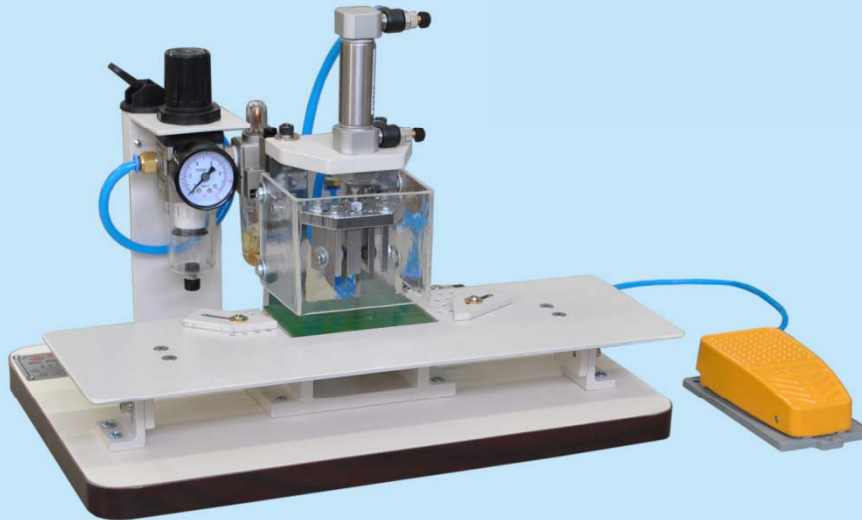


# NS-96 領彎邊打扼機 Collar Curve Edge Notcher



- 適用於將領彎邊朴開槽，使反領後弧位圓順
- 左右刀能調節前後位
- 刀片用普通介刀，配件容易
- 有安全罩及傍位，使用安全
- 氣動操作

- Suitable for collar curve edge and interlining notching to prevent crinkle at curve section after collar turning
- The positions of the left and right blades could be adjusted forward and backward
- Adopt general purpose blade cutter, which can be found in consumer goods stores
- Enhanced operation safety due to protective guard and guide
- Pneumatic operation

型號 Model	壓縮空氣壓力(kgf/cm <sup>2</sup> ) Compressed Air Pressure	耗壓縮空氣量(L/min) Compressed Air Consumption	淨重(kg) Net Weight	毛重(kg) Gross Weight	機身尺寸(mm) Packing Size
NS-96	5	10	8	10	390x260x270



**藝誠(余氏)發展有限公司**  
Ngai Shing Development Limited

香港九龍長沙灣永康街52號地下

G/F., 52 Wing Hong St.,

Cheung Sha Wan, Kln., Hong Kong.

Tel: (852)2741 9981, 2742 0078  
Fax: (852)2785 3149

E-MAIL: info@ngaishing.com  
Http://www.ngaishing.com