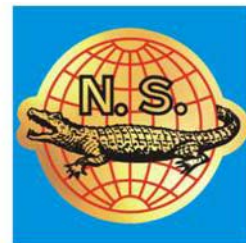


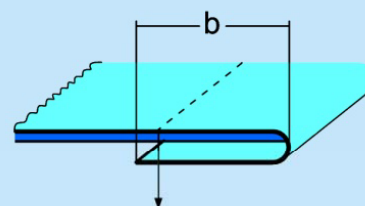
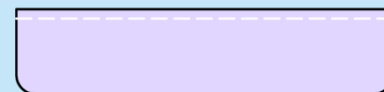
# NS-6047J-1

## 半自動包襯衫袖口收料架

### Semi-Automatic Shirt Cuff Hemming Stacker



	2	3500RPM	DPx17 75/11	



- 適用於已有粘合的袖口襖包縫
- 配合“F253-AB包袖口襖蝴蝶-加吹風”使用，并加裝收料架，可自動疊放袖口，整齊美觀且效率高
- 裁片放入蝴蝶後，機器自動執行車縫和收料，適合生手工人工操作

#### 跟機件：

縫紉機(JUKI DDL-8000A-SMSOBK)

F253-AB 包袖口襖蝴蝶-加吹風

P742 1/4" 右傍吊傍壓腳

#### 選購件：

C33-00191-30 縫紉機

(JUKI DLN-9010A-SS-WB/SC920AK/CP180A)

- Suitable for hemming cuff with fused interlining
- Used in combination with “F253-AB Cuff Interlining Attachment with Air Blowing” and material collector, it can automatically and efficiently stack cuffs in good order
- After cut piece feeding into attachment, machine will automatically perform sewing and collecting; therefore, even unskilled worker can handle it at ease

#### Standard:

Sewing machine(JUKI DDL-8000A-SMSOBK)

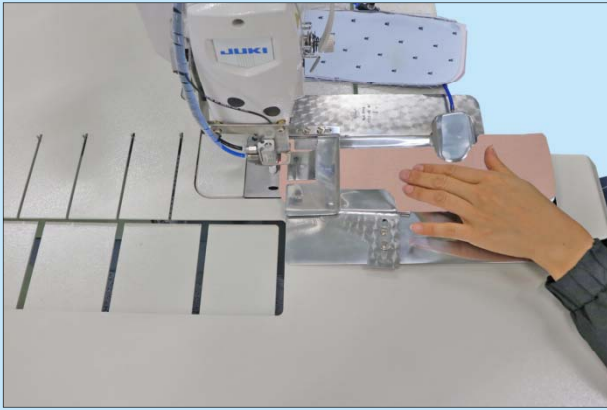
F253-AB Cuff Interlining Attachment with Air Blowing

P742 1/4" Right Flexible Guide Presser Foot

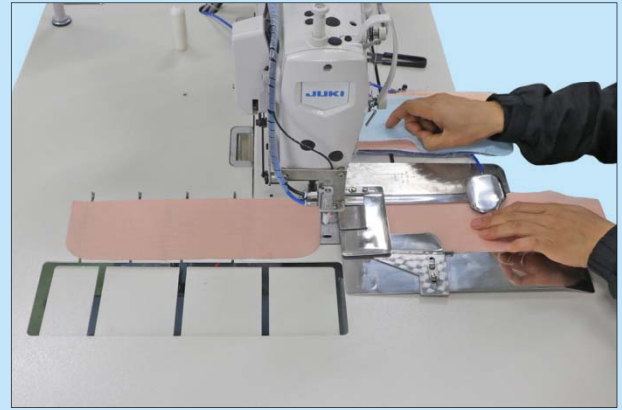
#### Option:

C33-00191-30 Sewing machine

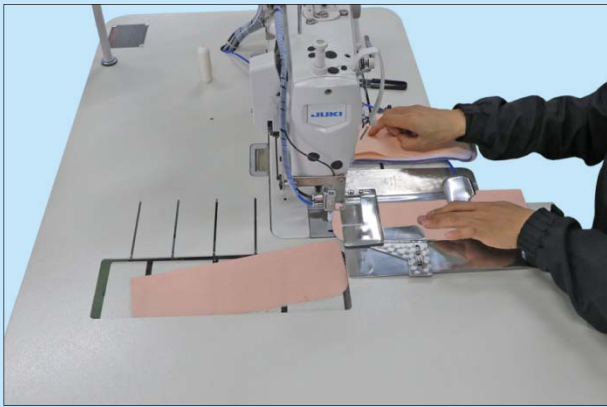
(JUKI DLN-9010A-SS-WB/SC920AK/CP180A)



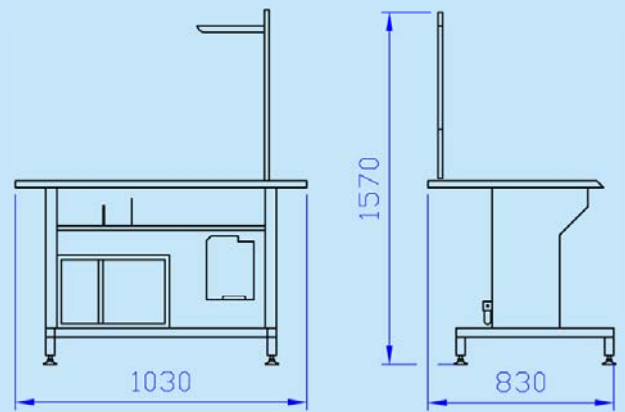
開始縫紉 Start sewing



第一裁片縫紉結束 First piece finished



收料 Collecting



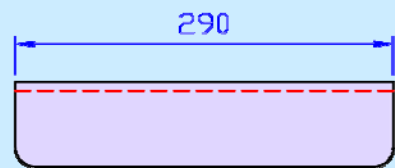
機身尺寸 Machine size

針距 Stitch Length(mm): 1.7

車速 Speed(RPM): 3500

袖口長度 Cuff Length(mm): 290

產量 Output(pcs/hr): 720



袖口長度 Cuff Length(mm)

型號 Model	適用衣車頭機型 Applicable Sewing Machine Head Model	電源 Power Supply	總功率(kW) Total Power	壓縮空氣壓力(kgf/cm <sup>2</sup> ) Compressed Air Pressure	耗壓縮空氣量(L/min) Compressed Air Consumption	機身尺寸(mm) Machine Size
NS-6047J-1	JUKI DDL-8000A/JUKI DLN-9010ASSWB	1PH/220V/50Hz	0.55	5	10	1030×830×1570



藝誠(余氏)發展有限公司  
Ngai Shing Development Limited

香港九龍長沙灣永康街52號地下  
G/F., 52 Wing Hong St.,  
Cheung Sha Wan, Kln., Hong Kong.

Tel: (852) 2741 9981, 2742 0078 E-MAIL: info@ngaishing.com  
Fax: (852) 2785 3149 Http://www.ngaishing.com