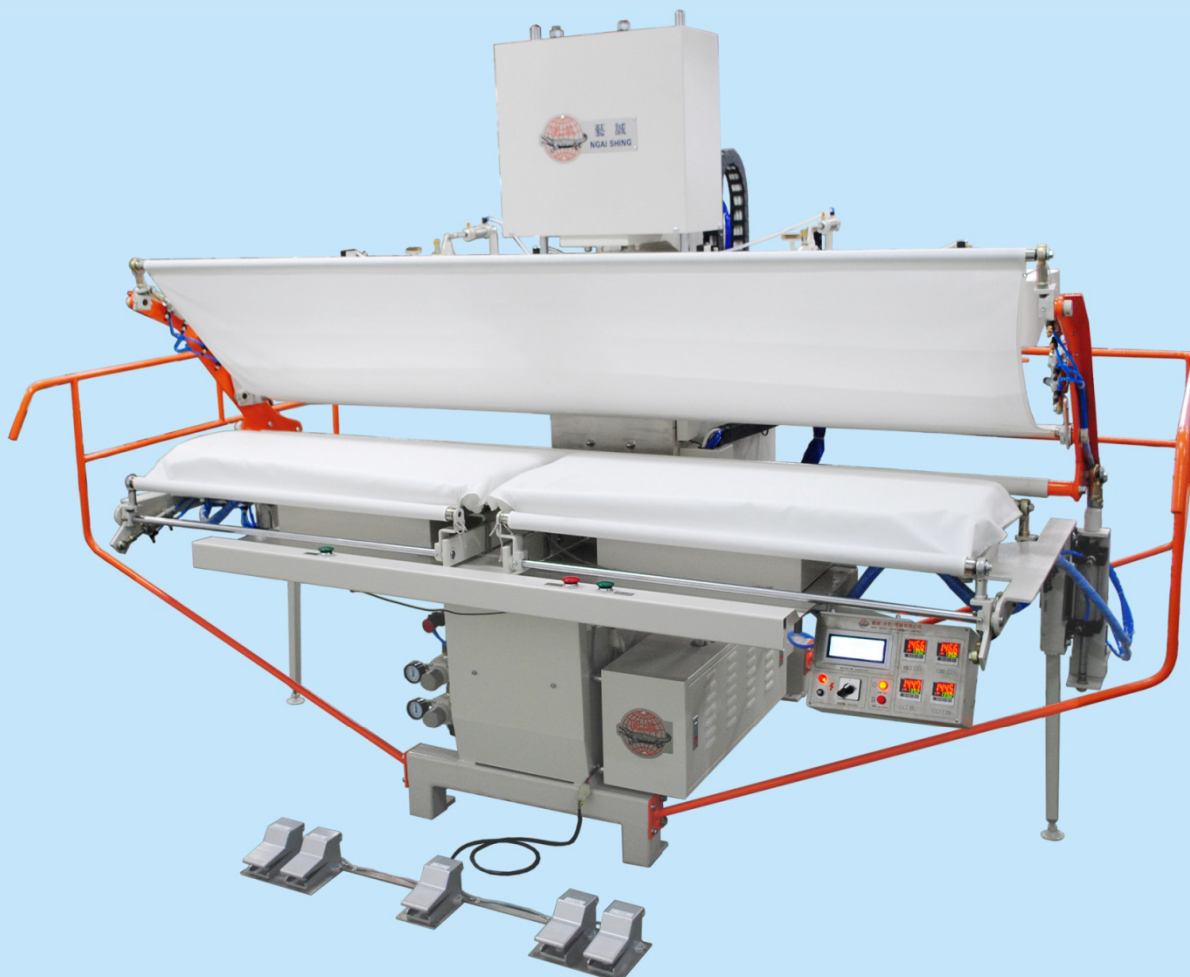


NS-8118D-E
自動雙褲管壓平機
Automatic Double Legger Press



- 適用於雙褲管壓熨
- 水平移位垂直加壓設計，增加視覺空間，擺放衣物方便，操作靈活，且加壓壓力大，效率高
- 採用PLC可編程控制器控制及人性化觸摸顯示屏操作
- 可根據不同布料選擇不同壓熨方式：微壓、輕壓、重壓
- 特製壓布框，可自動拉展褲管，方便褲管定位，使壓熨效果更佳
- 上模電加熱，上、下模可噴蒸氣及蒸汽保溫設計
- 下模備吹風和抽濕功能（需另購真空泵）配合壓布框可減少壓紋

選購件:

NS-3400系列真空抽濕泵

- Suitable for pressing double leggers
- Horizontal shift and vertical pressing design provides large visual space for operator to lay garments and operate; powerful vertical pressing pressure and high efficiency
- Adopt PLC and user friendly touch screen for operation
- Different pressing modes, i.e. slight press, light press and heavy press, available for selection to cater for various fabrics
- Special fabric pre-holding frame could stretch and hold trousers' legs automatically
- Upper mould is electric heated; both upper and lower moulds can spray steam and preserve heat
- Lower mould can blow and vacuum (need to purchase vacuum pump additionally) to minimize press mark with the assistance of pre-holding frame

Option:

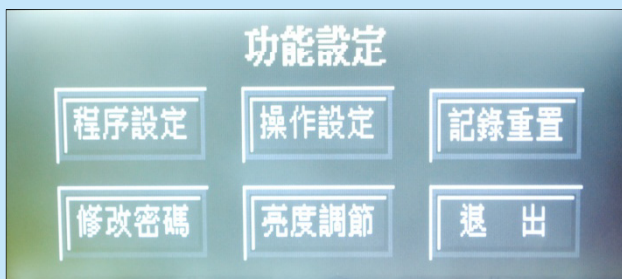
NS-3400 series vacuum pump



操作面板
Operation panel



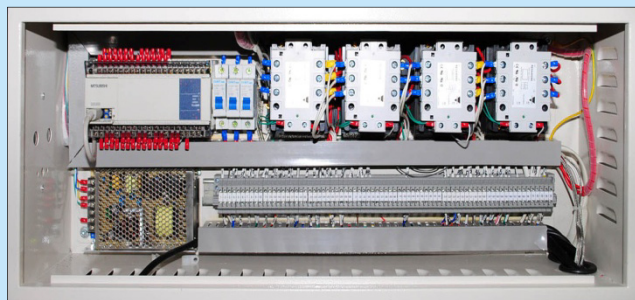
特製壓布框, 可自動拉展褲管
Special fabric clamping frame could stretch and hold trousers' legs automatically so as to get a better pressing effect



人性化觸摸顯示屏
User friendly touch screen



工作中
In working



控制電箱
Electric control box



壓熨效果
Pressed effect

型號 Model	電源 Power Supply	總功率(kW) Total Power	發熱線功率 (kW) Heater Power	壓縮空氣壓力 (kgf/cm ²) Compressed Air Pressure	耗壓縮空氣量 (L/min) Compressed Air Consumption	蒸氣壓力 (kgf/cm ²) Steam Pressure	耗蒸氣量 (kg/hr) Steam Consumption	機身尺寸(mm) Machine Size
NS-8118D-E	3PH/380V/50Hz	9.2	9	5	200	3~5	25*	2960x1800x2100



藝誠(余氏)發展有限公司
Ngai Shing Development Limited

香港九龍長沙灣永康街52號地下
G/F., 52 Wing Hong St.,
Cheung Sha Wan, Kln., Hong Kong.

Tel: (852) 2741 9981, 2742 0078 E-MAIL: info@ngaishing.com
Fax: (852) 2785 3149 Http://www.ngaishing.com