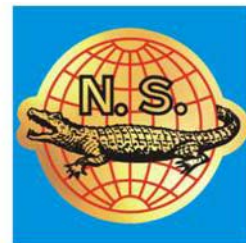







NS-6063J
自動擔桿機
Automatic Yoke Machine



	 2	 3500RPM	 DP x 5 #12	
---	---	--	---	---



- 本機適用於各種長短的男女襯衫擔桿縫製。最短到兒童襯衫
- 根據工藝需求可切換左右雙摺，中摺，中摺加環等
- 採用PLC控制和人性化觸摸屏操作
- 該機可根據工藝要求調節止口縫跡距離 0.5mm~1.5mm
- 備有自動收料裝置，提高工作效率

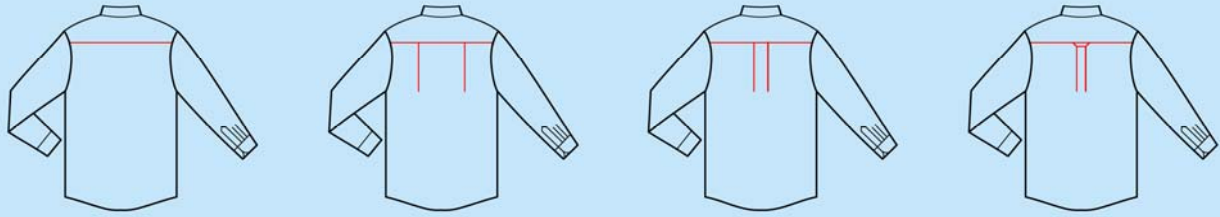
跟機件：

縫紉機(JUKI DDL-9000B-SS-OB/CP18A)

- Suitable for sewing yokes of different lengths for man and woman shirts, including the shortest for children
- As required by sewing process, it can switch between patterns of left & right double pleats, middle pleat and middle pleat plus ring
- Adopts PLC for control and user friendly touch screen for operation
- The machine can adjust the margin from sewing route from 0.5 to 1.5mm.
- With automatic material collecting device for efficiency improvement

Standards:

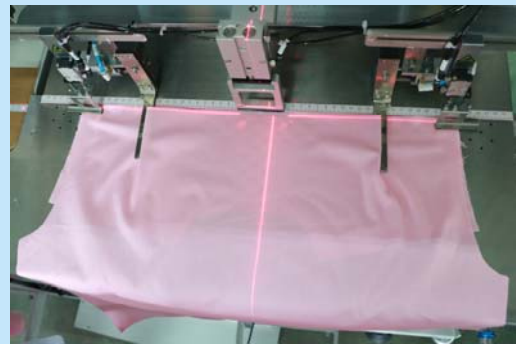
Sewing head(JUKI DDL-9000B-SS-OB/CP18A)



適合不同位置的摺的縫製
Suit for sewing pleats of different locations



只需輸入數據，操作簡單
Only need to input data, easy operation



工字摺的寬度和兩側的尺寸可根據需要調整
The width and dimensions on the 2 sides of box pleat can be adjusted according to requirement.



備有抽風功能，定位準確，速度快，效果完美
With suction function, accurate positioning, fast speed and perfect effect.



多片裁片一次縫製完成，效率高
Multi cut pieces can be sewn at one stroke, high efficiency

型號 Model	適用衣車頭機型 Applicable Sewing Head Model	電源 Power Supply	縫跡長度(mm) Stitch Length	縫跡與止口間隔(mm) Margin From Stitch	最大縫紉轉速 (Stitches/Minute) Max. Sewing Speed	最大縫製長度(mm) Max. Sewing Length	台面高度(mm) Table Height	機身尺寸(mm) Machine Size
NS-6063J	JUKI DDL-9000B-SS-OB/CP18A	1PH/220V/50Hz	0.5~2.5	0.5~1.5	5000	700	930	2410x865x1560



藝誠(余氏)發展有限公司
Ngai Shing Development Limited

香港九龍長沙灣永康街52號地下
G/F., 52 Wing Hong St.,
Cheung Sha Wan, Kln., Hong Kong.

Tel: (852) 2741 9981, 2742 0078 E-MAIL: info@ngaishing.com
Fax: (852) 2785 3149 Http://www.ngaishing.com