

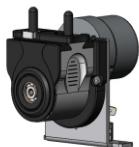


# WP200 USER MANUAL

//ON LINE MONITOR-  
OEM PERISTALTIC PUMP//

## ■ Product Introduction

The WP200 series OEM micro flow peristaltic pump consists of pump head, motor, and tube. It is mainly suitable for use with online monitoring instruments such as COD and CEMS. In addition to the continuation of the basic transmission function of the peristaltic pump, the pump head has stronger practicality. The unique design of elastic rollers, snap-fit installation, rolling positioning wheels, Flexible press tube, etc. makes the liquid flow transmission more stable, the tube life is longer and the loading and unloading is more convenient.

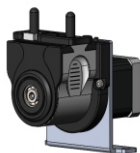


①AC synchronous motor-The advanced AC synchronous motor, the advanced reducer.

Speed: 1rpm/min、5rpm/min、10rpm/min

Flow: 0.20-14ml/min

①WP200/AC synchronous motor

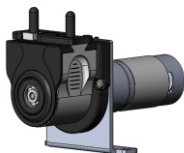


②Stepper motor-42 stepper motor.

Speed: Continuous use -100rpm, intermittent use-200rpm

Flow: 0.02-420ml/min

②WP200/Stepper motor



③DC motor-37 DC brushed reducer motor

Speed: 10、30、80、175rpm

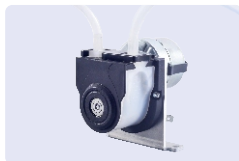
Flow: 2.0-245ml/min

③WP200/DC motor

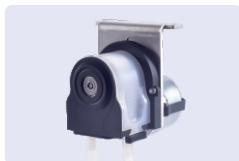
## ■ Application

- COD on line monitor
- CEMS on line monitor

## ■ Product Show



AC synchronous motor

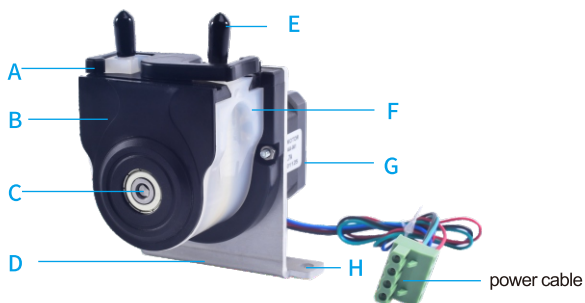


Various installation forms



Stepper motor

## ■ Product Structure



Locking type buckle (open)



Positioning wheel 2\*2



Tube connector



Dust plug



Upper pressure plate

A: Locking type buckle

B: Pump head housing

C: Roller bearing

D: L type mounting bracket

E: Tube connector/Dust plug\*2

F: Upper pressure plate

G: Motor

H: Mounting holes\*2

## ■ Part Material

Material	Roller shaft	SS304
	Upper pressure plate	PVDF
	Tube connector	PVDF
	Tube clamp	Stainless steel
	Pump head housing	IXEF
	Roller	PET
	Positioning wheel	POM
	Mounting bracket	Aluminium

## ■ Features

### ▪ Smooth transmission and high efficiency

The unique design of snap-fit installation, rolling positioning wheels, makes the transmission more stable and the tube more durable.

### ▪ Exquisite structure, easy installation

The connection of the pump tube is simple and ingenious. The unique design of elastic rollers (The gap of the squeeze tube is variable), Flexible press tube, loading and unloading operation is convenient.



### ▪ Suitable for small flow liquid transmission

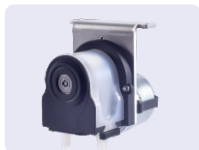
Specially designed for small flow sample detection, can complete accurate transmission.

### ▪ Durable and Cost-effective

Pump head is made of functional materials, which have good mechanical properties, chemical resistance and aging resistance.

### ▪ Flexible installation and easy integration

Various bracket installation methods, customizable, easy to integrate and use.



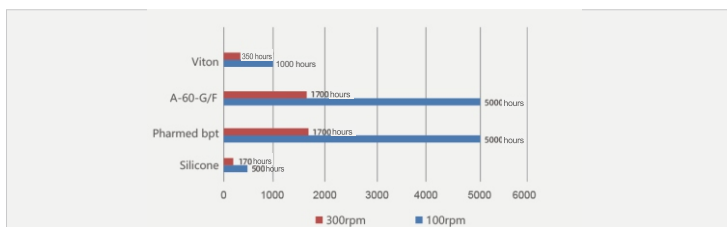
## ■ Technical Parameter -----

Number of channels	1
Number of rollers	2
Pressure tube method	Elastic pressure tube (self-adaption)
Vacuum degree	$\leq 0.08$ MPa
Outlet pressure	$\leq 0.15$ MPa
Sample temperature	+60°C
Environment temperature	+45°C
IP grade	IP20
Power Supply	AC 220V 50Hz (5W) or 24VDC (5W)
Size	78×108×80mm
Motor	AC synchronous motor
	42 Stepper motor
	37 DC brushed reducer motor

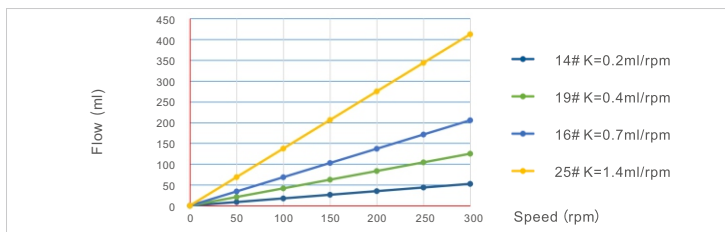
## ■ Applicable tube & flow -----

Tube specification	Material	Silicone, PharMed BPT tube, Neoprene(Novoprene)			
	Model	14#	19#	16#	25#
	ID(mm)	1.6	2.4	3.2	4.8
	OD(mm)	4.8	5.6	6.4	8
	Wall thickness(mm)	1.6	1.6	1.6	1.6

Tube flow	AC synchronous motor (ml/min)			Stepper motor(ml/min) Continuous use		DC motor(ml/min)			
	1 rpm	5 rpm	10rpm	0-100rpm	0-300rpm	10rpm	30rpm	80rpm	175rpm
14#	0.20	1.0	2.0	0 - 20	0 - 56	2.0	6	14	30
19#	0.40	2.0	4.0	0 - 40	0 - 120	4.0	12	32	70
16#	0.70	3.5	7.0	0 - 70	0 - 210	7.0	21	56	122
25#	1.40	7.0	14.0	0- 140	0 - 420	14.0	42	112	245



Reference value of tube life



WP200 Flow chart

## ■ Tube replacement and installation



① Hold the "Upper pressure plate" and unscrew the "Locking type buckle" clockwise.

② Remove the "Upper pressure plate" and start to replace the new tube.



③ Replace with a new tube .

- Remove the tube, squeeze the "tube clamp" to move inward.
- Pull out the "Tube connector" and take out the "Tube clamp".
- Install "Tube clamp" and "Tube connector" on the new tube in turn, adjust the position of the tube clamp, and fix the tube, connector.
- Reset the tube to "Upper pressure plate".

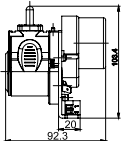
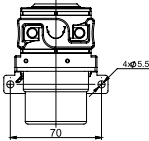
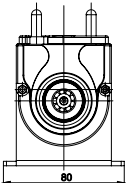
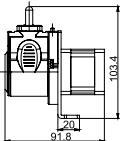
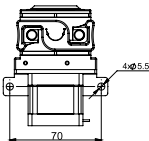
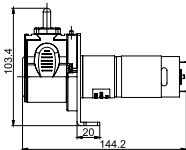
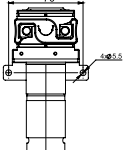


④ Reset the "Upper pressure plate" to the pump head, and clamp the "Locking type buckle" counter clock wise.

⑤ Connect the new tube to the "Tube connector" on both sides.



## ■ Installation size : Unit ( mm ) -----

WP200/AC synchronous motor			
WP200/ Stepper motor			
WP200/ DC motor			

## ■ Service advantage -----

### ■ Service commitment

Purchasing Chuangrui peristaltic pump products, you will enjoy: plan customization services, application for commissioning and installation services, technical support and training services.

### ■ Warranty commitment

- The product is guaranteed for one year (consumables such as tubes are not included in the warranty). If there is a failure during the warranty period, you can enjoy free repair and replacement of parts.
- If the product fails outside the warranty period, repairs and replacement parts are only charged at cost.

### ■ 2021.02.20.0 version



**Baoding Chuangrui Precision Pump Co., Ltd.**

**Address:** 2 Floors, East Unit, Building 12, ZOL Innovation Base, Huiyang street

**City:** Baoding, Hebei province

**Country:** China (Mainland)

**Telephone:** +86-312-5909528

**E-mail:** support@crpump.com

**Fax:** 86-312-3217330

**Website:** <http://www.crpump.com>

**Postcode:** 071000

